

## DATASHEET

# CCDC92 Rabbit Polyclonal Antibody

CAT. NO. APA15227

### KEY FEATURES

Target	CCDC92	Source / Host	Rabbit
Reactivity	Human, Mouse	Clonality	Polyclonal
Applications	WB	Conjugation	Unconjugated
Form / Buffer	Liquid in 0.42% Potassium phosphate, 0.87% Sodium chloride, pH 7.3, 30% glycerol, and 0.01% sodium azide.		Storage at -20°C

### BACKGROUND

Interferon-stimulated protein that plays a role in innate immunity. Strongly inhibits ebolavirus transcription and replication. Forms a complex with viral RNA-bound nucleocapsid NP and thereby prevents the transport of NP to the cell surface.

### APPLICATION

To ensure optimal assay performance, AREX recommends conducting reagent titration tailored to each testing system for optimal detection results.

WB	1:500 - 1:1000
----	----------------

\*Results are sample-specific. Please refer to your local assay conditions and test parameters for reference.

### PRODUCT OVERVIEW

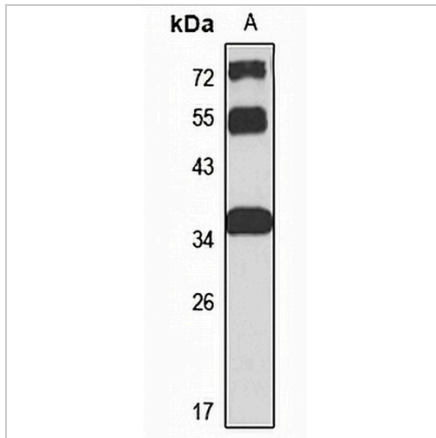
Description	Rabbit polyclonal antibody to CCDC92
Specificity	Recognizes endogenous levels of CCDC92 protein
Antibody Type	Primary antibody
Immunogen	Recombinant fusion protein of human CCDC92. The exact sequence is proprietary.
Purification	The antibody was purified by immunogen affinity chromatography.
Molecular Weight	Predicted: 35; Observed: 37 kD
Form/Buffer	Liquid in 0.42% Potassium phosphate, 0.87% Sodium chloride, pH 7.3, 30% glycerol, and 0.01% sodium azide.
Alternative Names	Coiled-coil domain-containing protein 92; Limkain beta-2
Gene Symbol	CCDC92
Entrez Gene	80212(Human); 215707(Mouse)
SwissProt	Q53HC0(Human); Q8VDN4(Mouse)

\*AREX continuously optimizes our products. Webpage content may not reflect the latest updates. For inquiries, please contact [info@arexbio.com](mailto:info@arexbio.com) or your local distributor.

\*Clone Number, Reactivity, Source/Host and Clonality can be found in the product name and Key Features section above.

**DATASHEET****CCDC92 Rabbit Polyclonal Antibody**

CAT. NO. APA15227

**DATA**

Western blot analysis of CCDC92 expression in SW480 (A) whole cell lysates. (Predicted band size: 35; 36 kD; Observed band size: 37 kD)

**STORAGE**

Store at 4°C short term. For long term storage, store at -20°C, avoiding freeze/thaw cycles.

**NOTE**

For Research Use Only. Not for diagnostic, therapeutics, prophylactic or in vivo use.