

DATASHEET

GCIP Rabbit Polyclonal Antibody

CAT. NO. APA15228

KEY FEATURES

Target	GCIP	Source / Host	Rabbit
Reactivity	Human, Mouse, Rat	Clonality	Polyclonal
Applications	WB	Conjugation	Unconjugated
Form / Buffer	Liquid in 0.42% Potassium phosphate, 0.87% Sodium chloride, pH 7.3, 30% glycerol, and 0.01% sodium azide.		Storage at-20°C

BACKGROUND

May negatively regulate cell cycle progression. May act at least in part via inhibition of the cyclin-D1/CDK4 complex, thereby preventing phosphorylation of RB1 and blocking E2F-dependent transcription.

APPLICATION

To ensure optimal assay performance, AREX recommends conducting reagent titration tailored to each testing system for optimal detection results.

WB	1:500 - 1:2000
----	----------------

*Results are sample-specific. Please refer to your local assay conditions and test parameters for reference.

PRODUCT OVERVIEW

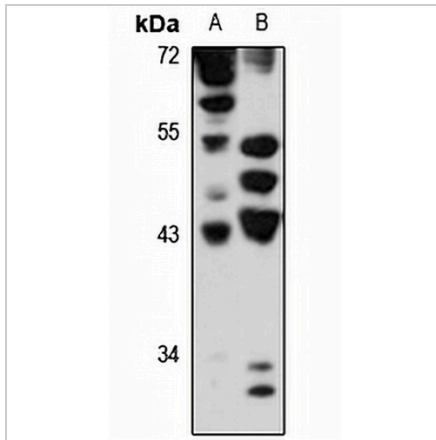
Description	Rabbit polyclonal antibody to GCIP
Specificity	Recognizes endogenous levels of GCIP protein
Antibody Type	Primary antibody
Immunogen	Recombinant fusion protein of human GCIP. The exact sequence is proprietary.
Purification	The antibody was purified by immunogen affinity chromatography.
Molecular Weight	Predicted: 22; Observed: 42 kD
Form/Buffer	Liquid in 0.42% Potassium phosphate, 0.87% Sodium chloride, pH 7.3, 30% glycerol, and 0.01% sodium azide.
Alternative Names	DIP1; GCIP; HHM; Cyclin-D1-binding protein 1; Grap2 and cyclin-D-interacting protein; Human homolog of Maid
Gene Symbol	CCNDBP1
Entrez Gene	23582(Human); 17151(Mouse); 362201(Rat)
SwissProt	O95273(Human); Q3TVC7(Mouse); Q5BK06(Rat)

*AREX continuously optimizes our products. Webpage content may not reflect the latest updates. For inquiries, please contact info@arexbio.com or your local distributor.

*Clone Number, Reactivity, Source/Host and Clonality can be found in the product name and Key Features section above.

DATASHEET**GCIP Rabbit Polyclonal Antibody**

CAT. NO. APA15228

DATA

Western blot analysis of GCIP expression in A549 (A), mouse heart (B) whole cell lysates. (Predicted band size: 22; 26; 34; 40 kD; Observed band size: 42 kD)

STORAGE

Store at 4°C short term. For long term storage, store at -20°C, avoiding freeze/thaw cycles.

NOTE

For Research Use Only. Not for diagnostic, therapeutics, prophylactic or in vivo use.