

DATASHEET

Cyclin L2 Rabbit Polyclonal Antibody

CAT. NO. APA15231

KEY FEATURES

| | | | |
|---------------|---|---------------|---------------------|
| Target | Cyclin L2 | Source / Host | Rabbit |
| Reactivity | Human | Clonality | Polyclonal |
| Applications | WB | Conjugation | Unconjugated |
| Form / Buffer | Liquid in 0.42% Potassium phosphate, 0.87% Sodium chloride, pH 7.3, 30% glycerol, and 0.01% sodium azide. | | Storage at -20°C |

BACKGROUND

Regulatory component of the cyclin-L-CDK11 complex that regulates transcription and pre-mRNA splicing . May induce cell death, possibly by acting on the transcription and RNA processing of apoptosis-related factors .

APPLICATION

To ensure optimal assay performance, AREX recommends conducting reagent titration tailored to each testing system for optimal detection results.

| | |
|----|----------------|
| WB | 1:500 - 1:2000 |
|----|----------------|

*Results are sample-specific. Please refer to your local assay conditions and test parameters for reference.

PRODUCT OVERVIEW

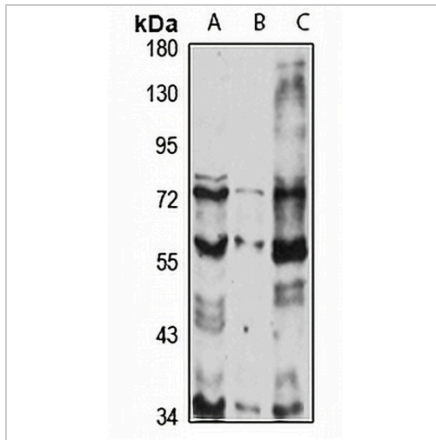
| | |
|-------------------|---|
| Description | Rabbit polyclonal antibody to Cyclin L2 |
| Specificity | Recognizes endogenous levels of Cyclin L2 protein |
| Antibody Type | Primary antibody |
| Immunogen | Recombinant fusion protein of human Cyclin L2. The exact sequence is proprietary. |
| Purification | The antibody was purified by immunogen affinity chromatography. |
| Molecular Weight | Predicted: 24; Observed: 58 kD |
| Form/Buffer | Liquid in 0.42% Potassium phosphate, 0.87% Sodium chloride, pH 7.3, 30% glycerol, and 0.01% sodium azide. |
| Alternative Names | Cyclin-L2; Paneth cell-enhanced expression protein |
| Gene Symbol | CCNL2 |
| Entrez Gene | 81669(Human) |
| SwissProt | Q96S94(Human) |

*AREX continuously optimizes our products. Webpage content may not reflect the latest updates. For inquiries, please contact info@arexbio.com or your local distributor.

*Clone Number, Reactivity, Source/Host and Clonality can be found in the product name and Key Features section above.

DATASHEET**Cyclin L2 Rabbit Polyclonal Antibody**

CAT. NO. APA15231

DATA

Western blot analysis of Cyclin L2 expression in HeLa (A), Jurkat (B), A375 (C) whole cell lysates. (Predicted band size: 24; 25; 33; 58 kD; Observed band size: 58 kD)

STORAGE

Store at 4°C short term. For long term storage, store at -20°C, avoiding freeze/thaw cycles.

NOTE

For Research Use Only. Not for diagnostic, therapeutics, prophylactic or in vivo use.