

**DATASHEET**

**CCT6B Rabbit Polyclonal Antibody**

CAT. NO. APA15235

**KEY FEATURES**

Target	CCT6B	Source / Host	Rabbit
Reactivity	Human, Mouse, Rat	Clonality	Polyclonal
Applications	WB, IF/ICC	Conjugation	Unconjugated
Form / Buffer	Liquid in 0.42% Potassium phosphate, 0.87% Sodium chloride, pH 7.3, 30% glycerol, and 0.01% sodium azide.		Storage at -20°C

**BACKGROUND**

Could function as a component of a tissue-specific chaperonin-containing T-complex (TRiC), a molecular chaperone complex that assists the folding of actin, tubulin and other proteins upon ATP hydrolysis.

**APPLICATION**

To ensure optimal assay performance, AREX recommends conducting reagent titration tailored to each testing system for optimal detection results.

WB	1:500 - 1:2000
IF/ICC	1:50 - 1:200

\*Results are sample-specific. Please refer to your local assay conditions and test parameters for reference.

**PRODUCT OVERVIEW**

Description	Rabbit polyclonal antibody to CCT6B
Specificity	Recognizes endogenous levels of CCT6B protein
Antibody Type	Primary antibody
Immunogen	Recombinant fusion protein of human CCT6B. The exact sequence is proprietary.
Purification	The antibody was purified by immunogen affinity chromatography.
Molecular Weight	Predicted: 53; Observed: 58 kD
Form/Buffer	Liquid in 0.42% Potassium phosphate, 0.87% Sodium chloride, pH 7.3, 30% glycerol, and 0.01% sodium azide.
Alternative Names	T-complex protein 1 subunit zeta-2; TCP-1-zeta-2; CCT-zeta-2; CCT-zeta-like; TCP-1-zeta-like; Testis-specific Tcp20; Testis-specific protein TSA303
Gene Symbol	CCT6B
Entrez Gene	10693(Human); 12467(Mouse)
SwissProt	Q92526(Human); Q61390(Mouse)

\*AREX continuously optimizes our products. Webpage content may not reflect the latest updates. For inquiries, please contact [info@arexbio.com](mailto:info@arexbio.com) or your local distributor.

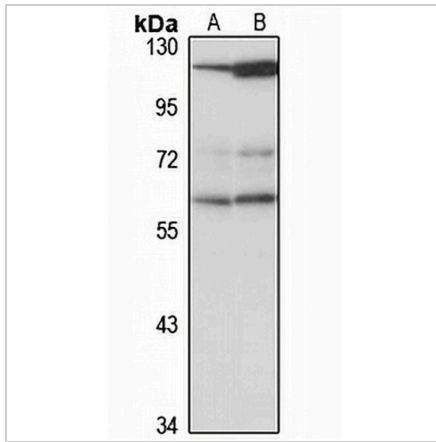
\*Clone Number, Reactivity, Source/Host and Clonality can be found in the product name and Key Features section above.

**DATASHEET**

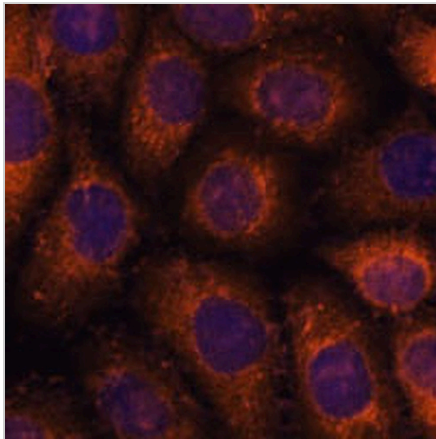
**CCT6B Rabbit Polyclonal Antibody**

CAT. NO. APA15235

**DATA**



Western blot analysis of CCT6B expression in mouse testis (A), rat testis (B) whole cell lysates. (Predicted band size: 53; 57 kD; Observed band size: 58 kD)



Immunofluorescent analysis of CCT6B staining in HeLa cells. Formalin-fixed cells were permeabilized with 0.1% Triton X-100 in TBS for 5-10 minutes and blocked with 3% BSA-PBS for 30 minutes at room temperature. Cells were probed with the primary antibody in 3% BSA-PBS and incubated overnight at 4 °C in a humidified chamber. Cells were washed with PBST and incubated with a AREX® Fluor 594-conjugated secondary antibody (red) in PBS at room temperature in the dark. DAPI was used to stain the cell nuclei (blue).

**STORAGE**

Store at 4°C short term. For long term storage, store at -20°C, avoiding freeze/thaw cycles.

**NOTE**

For Research Use Only. Not for diagnostic, therapeutics, prophylactic or in vivo use.