

DATASHEET

CD300e Rabbit Polyclonal Antibody

CAT. NO. APA15236

KEY FEATURES

Target	CD300e	Source / Host	Rabbit
Reactivity	Human, Mouse, Rat	Clonality	Polyclonal
Applications	WB	Conjugation	Unconjugated
Form / Buffer	Liquid in 0.42% Potassium phosphate, 0.87% Sodium chloride, pH 7.3, 30% glycerol, and 0.01% sodium azide.		Storage at -20°C

BACKGROUND

Probably acts as an activating receptor.

APPLICATION

To ensure optimal assay performance, AREX recommends conducting reagent titration tailored to each testing system for optimal detection results.

WB	1:500 - 1:2000
----	----------------

*Results are sample-specific. Please refer to your local assay conditions and test parameters for reference.

PRODUCT OVERVIEW

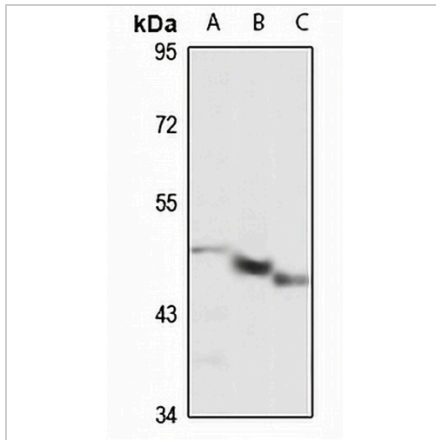
Description	Rabbit polyclonal antibody to CD300e
Specificity	Recognizes endogenous levels of CD300e protein
Antibody Type	Primary antibody
Immunogen	Recombinant fusion protein of human CD300e. The exact sequence is proprietary.
Purification	The antibody was purified by immunogen affinity chromatography.
Molecular Weight	Predicted: 22 kD; Observed: 50 kD
Form/Buffer	Liquid in 0.42% Potassium phosphate, 0.87% Sodium chloride, pH 7.3, 30% glycerol, and 0.01% sodium azide.
Alternative Names	CD300LE; CLM2; CMRF35A5; IREM2; CMRF35-like molecule 2; CLM-2; CD300 antigen-like family member E; CMRF35-A5; Immune receptor expressed on myeloid cells 2; IREM-2; Polymeric immunoglobulin receptor 2; PIgR-2; PIgR2; Poly-Ig receptor 2; CD300e
Gene Symbol	CD300E
Entrez Gene	342510(Human); 217306(Mouse)
SwissProt	Q496F6(Human); Q8K249(Mouse)

*AREX continuously optimizes our products. Webpage content may not reflect the latest updates. For inquiries, please contact info@arexbio.com or your local distributor.

*Clone Number, Reactivity, Source/Host and Clonality can be found in the product name and Key Features section above.

DATASHEET**CD300e Rabbit Polyclonal Antibody**

CAT. NO. APA15236

DATA

Western blot analysis of CD300e expression in HeLa (A), mouse brain (B), rat heart (C) whole cell lysates. (Predicted band size: 22 kD; Observed band size: 50 kD)

STORAGE

Store at 4°C short term. For long term storage, store at -20°C, avoiding freeze/thaw cycles.

NOTE

For Research Use Only. Not for diagnostic, therapeutics, prophylactic or in vivo use.