

DATASHEET

CD320 Rabbit Polyclonal Antibody

CAT. NO. APA15237

KEY FEATURES

| | | | |
|---------------|---|---------------|---------------------|
| Target | CD320 | Source / Host | Rabbit |
| Reactivity | Human, Mouse, Rat | Clonality | Polyclonal |
| Applications | WB | Conjugation | Unconjugated |
| Form / Buffer | Liquid in 0.42% Potassium phosphate, 0.87% Sodium chloride, pH 7.3, 30% glycerol, and 0.01% sodium azide. | | Storage at -20°C |

BACKGROUND

Receptor for transcobalamin saturated with cobalamin (TCbl) . Plays an important role in cobalamin uptake . Plasma membrane protein that is expressed on follicular dendritic cells (FDC) and mediates interaction with germinal center B cells . Functions as costimulator to promote B cell responses to antigenic stimuli; promotes B cell differentiation and proliferation . Germinal center-B (GC-B) cells differentiate into memory B-cells and plasma cells (PC) through interaction with T-cells and follicular dendritic cells (FDC) . CD320 augments the proliferation of PC precursors generated by IL-10 .

APPLICATION

To ensure optimal assay performance, AREX recommends conducting reagent titration tailored to each testing system for optimal detection results.

| | |
|----|----------------|
| WB | 1:500 - 1:2000 |
|----|----------------|

*Results are sample-specific. Please refer to your local assay conditions and test parameters for reference.

PRODUCT OVERVIEW

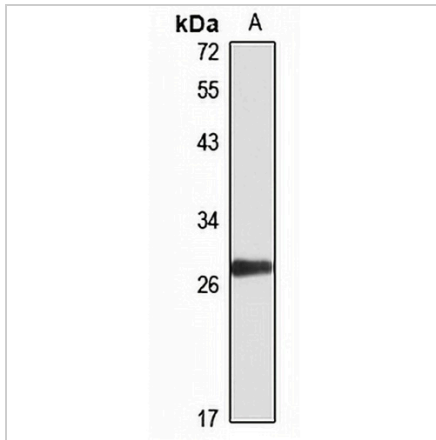
| | |
|-------------------|---|
| Description | Rabbit polyclonal antibody to CD320 |
| Specificity | Recognizes endogenous levels of CD320 protein |
| Antibody Type | Primary antibody |
| Immunogen | Recombinant fusion protein of human CD320. The exact sequence is proprietary. |
| Purification | The antibody was purified by immunogen affinity chromatography. |
| Molecular Weight | Predicted: 24; Observed: 30 kD |
| Form/Buffer | Liquid in 0.42% Potassium phosphate, 0.87% Sodium chloride, pH 7.3, 30% glycerol, and 0.01% sodium azide. |
| Alternative Names | 8D6A; CD320 antigen; 8D6 antigen; FDC-signaling molecule 8D6; FDC-SM-8D6; Transcobalamin receptor; TCblR; CD320 |
| Gene Symbol | CD320 |
| Entrez Gene | 51293(Human); 54219(Mouse); 362851(Rat) |
| SwissProt | Q9NPF0(Human); Q9Z1P5(Mouse); Q5HZW5(Rat) |

*AREX continuously optimizes our products. Webpage content may not reflect the latest updates. For inquiries, please contact info@arexbio.com or your local distributor.

*Clone Number, Reactivity, Source/Host and Clonality can be found in the product name and Key Features section above.

DATASHEET**CD320 Rabbit Polyclonal Antibody**

CAT. NO. APA15237

DATA

Western blot analysis of CD320 expression in mouse testis (A) whole cell lysates.
(Predicted band size: 24; 28 kD; Observed band size: 30 kD)

STORAGE

Store at 4°C short term. For long term storage, store at -20°C, avoiding freeze/thaw cycles.

NOTE

For Research Use Only. Not for diagnostic, therapeutics, prophylactic or in vivo use.