

DATASHEET

CDK12 Rabbit Polyclonal Antibody

CAT. NO. APA15250

KEY FEATURES

Target	CDK12	Source / Host	Rabbit
Reactivity	Human, Mouse, Rat	Clonality	Polyclonal
Applications	WB	Conjugation	Unconjugated
Form / Buffer	Liquid in 0.42% Potassium phosphate, 0.87% Sodium chloride, pH 7.3, 30% glycerol, and 0.01% sodium azide.		Storage at -20°C

BACKGROUND

Cyclin-dependent kinase that phosphorylates the C-terminal domain (CTD) of the large subunit of RNA polymerase II (POLR2A), thereby acting as a key regulator of transcription elongation. Regulates the expression of genes involved in DNA repair and is required for the maintenance of genomic stability. Preferentially phosphorylates 'Ser-5' in CTD repeats that are already phosphorylated at 'Ser-7', but can also phosphorylate 'Ser-2'. Required for RNA splicing, possibly by phosphorylating SRSF1/SF2. Involved in regulation of MAP kinase activity, possibly leading to affect the response to estrogen inhibitors.

APPLICATION

To ensure optimal assay performance, AREX recommends conducting reagent titration tailored to each testing system for optimal detection results.

WB	1:500 - 1:2000
----	----------------

*Results are sample-specific. Please refer to your local assay conditions and test parameters for reference.

PRODUCT OVERVIEW

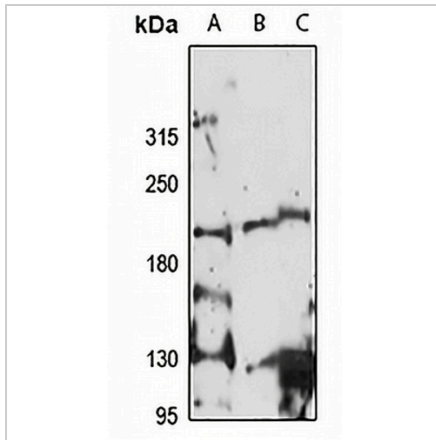
Description	Rabbit polyclonal antibody to CDK12
Specificity	Recognizes endogenous levels of CDK12 protein
Antibody Type	Primary antibody
Immunogen	Recombinant fusion protein of human CDK12. The exact sequence is proprietary.
Purification	The antibody was purified by immunogen affinity chromatography.
Molecular Weight	Predicted: 141; Observed: 200 kD
Form/Buffer	Liquid in 0.42% Potassium phosphate, 0.87% Sodium chloride, pH 7.3, 30% glycerol, and 0.01% sodium azide.
Alternative Names	CRK7; CRKRS; KIAA0904; Cyclin-dependent kinase 12; Cdc2-related kinase arginine/serine-rich; CrkRS; Cell division cycle 2-related protein kinase 7; CDC2-related protein kinase 7; Cell division protein kinase 12; hCDK12
Gene Symbol	CDK12
Entrez Gene	51755(Human); 69131(Mouse); 192350(Rat)
SwissProt	Q9NYV4(Human); Q14AX6(Mouse); Q3MJK5(Rat)

*AREX continuously optimizes our products. Webpage content may not reflect the latest updates. For inquiries, please contact info@arexbio.com or your local distributor.

*Clone Number, Reactivity, Source/Host and Clonality can be found in the product name and Key Features section above.

DATASHEET**CDK12 Rabbit Polyclonal Antibody**

CAT. NO. APA15250

DATA

Western blot analysis of CDK12 expression in HepG2 (A), mouse liver (B), rat liver (C) whole cell lysates. (Predicted band size: 141; 163; 164 kD; Observed band size: 200 kD)

STORAGE

Store at 4°C short term. For long term storage, store at -20°C, avoiding freeze/thaw cycles.

NOTE

For Research Use Only. Not for diagnostic, therapeutics, prophylactic or in vivo use.