

DATASHEET

CDC2L5 Rabbit Polyclonal Antibody

CAT. NO. APA15251

KEY FEATURES

Target	CDC2L5	Source / Host	Rabbit
Reactivity	Human, Mouse	Clonality	Polyclonal
Applications	WB	Conjugation	Unconjugated
Form / Buffer	Liquid in 0.42% Potassium phosphate, 0.87% Sodium chloride, pH 7.3, 30% glycerol, and 0.01% sodium azide.		Storage at -20°C

BACKGROUND

Cyclin-dependent kinase which displays CTD kinase activity and is required for RNA splicing. Has CTD kinase activity by hyperphosphorylating the C-terminal heptapeptide repeat domain (CTD) of the largest RNA polymerase II subunit RPB1, thereby acting as a key regulator of transcription elongation. Required for RNA splicing, probably by phosphorylating SRSF1/SF2. Required during hematopoiesis. In case of infection by HIV-1 virus, interacts with HIV-1 Tat protein acetylated at 'Lys-50' and 'Lys-51', thereby increasing HIV-1 mRNA splicing and promoting the production of the doubly spliced HIV-1 protein Nef.

APPLICATION

To ensure optimal assay performance, AREX recommends conducting reagent titration tailored to each testing system for optimal detection results.

WB	1:500 - 1:2000
----	----------------

*Results are sample-specific. Please refer to your local assay conditions and test parameters for reference.

PRODUCT OVERVIEW

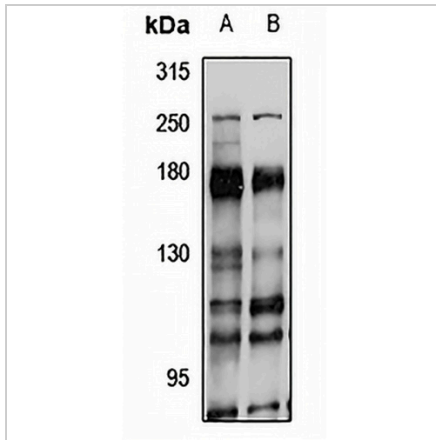
Description	Rabbit polyclonal antibody to CDC2L5
Specificity	Recognizes endogenous levels of CDC2L5 protein
Antibody Type	Primary antibody
Immunogen	Recombinant fusion protein of human CDC2L5. The exact sequence is proprietary.
Purification	The antibody was purified by immunogen affinity chromatography.
Molecular Weight	Predicted: 158; Observed: 164 kD
Form/Buffer	Liquid in 0.42% Potassium phosphate, 0.87% Sodium chloride, pH 7.3, 30% glycerol, and 0.01% sodium azide.
Alternative Names	CDC2L; CDC2L5; CHED; KIAA1791; Cyclin-dependent kinase 13; CDC2-related protein kinase 5; Cell division cycle 2-like protein kinase 5; Cell division protein kinase 13; hCDK13; Cholinesterase-related cell division controller
Gene Symbol	CDK13
Entrez Gene	8621(Human); 69562(Mouse)
SwissProt	Q14004(Human); Q69ZA1(Mouse)

*AREX continuously optimizes our products. Webpage content may not reflect the latest updates. For inquiries, please contact info@arex.bio or your local distributor.

*Clone Number, Reactivity, Source/Host and Clonality can be found in the product name and Key Features section above.

DATASHEET**CDC2L5 Rabbit Polyclonal Antibody**

CAT. NO. APA15251

DATA

Western blot analysis of CDC2L5 expression in LO2 (A), Jurkat (B) whole cell lysates. (Predicted band size: 158; 164 kD; Observed band size: 164 kD)

STORAGE

Store at 4°C short term. For long term storage, store at -20°C, avoiding freeze/thaw cycles.

NOTE

For Research Use Only. Not for diagnostic, therapeutics, prophylactic or in vivo use.