

DATASHEET

C/EBP delta Rabbit Polyclonal Antibody

CAT. NO. APA15263

KEY FEATURES

Target	C/EBP delta	Source / Host	Rabbit
Reactivity	Human, Rat	Clonality	Polyclonal
Applications	WB	Conjugation	Unconjugated
Form / Buffer	Liquid in 0.42% Potassium phosphate, 0.87% Sodium chloride, pH 7.3, 30% glycerol, and 0.01% sodium azide.		Storage at-20°C

BACKGROUND

Transcription activator that recognizes two different DNA motifs: the CCAAT homology common to many promoters and the enhanced core homology common to many enhancers . Important transcription factor regulating the expression of genes involved in immune and inflammatory responses . Transcriptional activator that enhances IL6 transcription alone and as heterodimer with CEBPB .

APPLICATION

To ensure optimal assay performance, AREX recommends conducting reagent titration tailored to each testing system for optimal detection results.

WB	1:500 - 1:2000
----	----------------

*Results are sample-specific. Please refer to your local assay conditions and test parameters for reference.

PRODUCT OVERVIEW

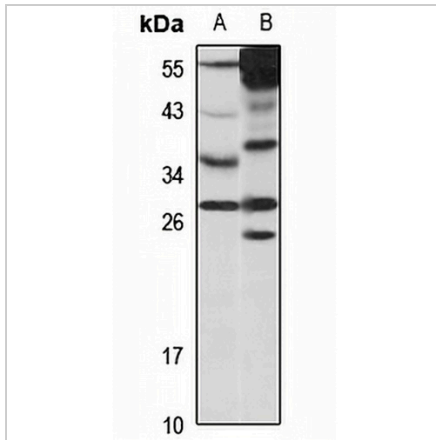
Description	Rabbit polyclonal antibody to C/EBP delta
Specificity	Recognizes endogenous levels of C/EBP delta protein
Antibody Type	Primary antibody
Immunogen	Recombinant fusion protein of human C/EBP delta. The exact sequence is proprietary.
Purification	The antibody was purified by immunogen affinity chromatography.
Molecular Weight	Predicted: 28 kD; Observed: 28 kD
Form/Buffer	Liquid in 0.42% Potassium phosphate, 0.87% Sodium chloride, pH 7.3, 30% glycerol, and 0.01% sodium azide.
Alternative Names	CCAAT/enhancer-binding protein delta; C/EBP delta; Nuclear factor NF-IL6-beta; NF-IL6-beta
Gene Symbol	CEBPD
Entrez Gene	1052(Human); 25695(Rat)
SwissProt	P49716(Human); Q03484(Rat)

*AREX continuously optimizes our products. Webpage content may not reflect the latest updates. For inquiries, please contact info@arexbio.com or your local distributor.

*Clone Number, Reactivity, Source/Host and Clonality can be found in the product name and Key Features section above.

DATASHEET**C/EBP delta Rabbit Polyclonal Antibody**

CAT. NO. APA15263

DATA

Western blot analysis of C/EBP delta expression in A549 (A), rat brain (B) whole cell lysates. (Predicted band size: 28 kD; Observed band size: 28 kD)

STORAGE

Store at 4°C short term. For long term storage, store at -20°C, avoiding freeze/thaw cycles.

NOTE

For Research Use Only. Not for diagnostic, therapeutics, prophylactic or in vivo use.