

**DATASHEET**

**CENPQ Rabbit Polyclonal Antibody**

CAT. NO. APA15270

**KEY FEATURES**

|               |   |               |                     |
|---------------|---|---------------|---------------------|
| Target        | CENPQ   | Source / Host | Rabbit              |
| Reactivity    | Human, Mouse, Rat   | Clonality     | Polyclonal          |
| Applications  | WB  | Conjugation   | Unconjugated        |
| Form / Buffer | Liquid in 0.42% Potassium phosphate, 0.87% Sodium chloride, pH 7.3, 30% glycerol, and 0.01% sodium azide. |               | Storage<br>at -20°C |

**BACKGROUND**

Component of the CENPA-CAD (nucleosome distal) complex, a complex recruited to centromeres which is involved in assembly of kinetochore proteins, mitotic progression and chromosome segregation. May be involved in incorporation of newly synthesized CENPA into centromeres via its interaction with the CENPA-NAC complex complex, a complex recruited to centromeres which is involved in assembly of kinetochore proteins, mitotic progression and chromosome segregation. May be involved in incorporation of newly synthesized CENPA into centromeres via its interaction with the CENPA-NAC complex . Plays an important role in chromosome congression and in the recruitment of CENP-O complex (which comprises CENPO, CENPP, CENPQ and CENPU), CENPE and PLK1 to the kinetochores .

**APPLICATION**

To ensure optimal assay performance, AREX recommends conducting reagent titration tailored to each testing system for optimal detection results.

|    |                |
|----|----------------|
| WB | 1:500 - 1:1000 |
|----|----------------|

\*Results are sample-specific. Please refer to your local assay conditions and test parameters for reference.

**PRODUCT OVERVIEW**

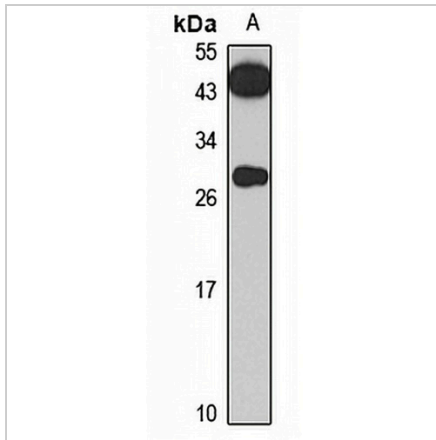
|                   |   |
|-------------------|---|
| Description       | Rabbit polyclonal antibody to CENPQ   |
| Specificity       | Recognizes endogenous levels of CENPQ protein   |
| Antibody Type     | Primary antibody  |
| Immunogen         | Recombinant fusion protein of human CENPQ. The exact sequence is proprietary.                             |
| Purification      | The antibody was purified by immunogen affinity chromatography.   |
| Molecular Weight  | Predicted: 30 kD; Observed: 31 kD   |
| Form/Buffer       | Liquid in 0.42% Potassium phosphate, 0.87% Sodium chloride, pH 7.3, 30% glycerol, and 0.01% sodium azide. |
| Alternative Names | C6orf139; Centromere protein Q; CENP-Q  |
| Gene Symbol       | CENPQ   |
| Entrez Gene       | 55166(Human); 83815(Mouse); 363198(Rat)   |
| SwissProt         | Q7L2Z9(Human); Q9CPQ5(Mouse); Q66H02(Rat)   |

\*AREX continuously optimizes our products. Webpage content may not reflect the latest updates. For inquiries, please contact [info@arexbio.com](mailto:info@arexbio.com) or your local distributor.

\*Clone Number, Reactivity, Source/Host and Clonality can be found in the product name and Key Features section above.

**DATASHEET****CENPQ Rabbit Polyclonal Antibody**

CAT. NO. APA15270

**DATA**

Western blot analysis of CENPQ expression in Jurkat (A) whole cell lysates. (Predicted band size: 30 kD; Observed band size: 31 kD)

**STORAGE**

Store at 4°C short term. For long term storage, store at -20°C, avoiding freeze/thaw cycles.

**NOTE**

For Research Use Only. Not for diagnostic, therapeutics, prophylactic or in vivo use.