

DATASHEET

CEP63 Rabbit Polyclonal Antibody

CAT. NO. APA15274

KEY FEATURES

Target	CEP63	Source / Host	Rabbit
Reactivity	Human, Mouse, Rat	Clonality	Polyclonal
Applications	WB	Conjugation	Unconjugated
Form / Buffer	Liquid in 0.42% Potassium phosphate, 0.87% Sodium chloride, pH 7.3, 30% glycerol, and 0.01% sodium azide.		Storage at-20°C

BACKGROUND

Required for normal spindle assembly . Plays a key role in mother-centriole-dependent centriole duplication; the function seems also to involve CEP152, CDK5RAP2 and WDR62 through a stepwise assembled complex at the centrosome that recruits CDK2 required for centriole duplication . Reported to be required for centrosomal recruitment of CEP152; however, this function has been questioned . Also recruits CDK1 to centrosomes . Plays a role in DNA damage response . Following DNA damage, such as double-strand breaks (DSBs), is removed from centrosomes; this leads to the inactivation of spindle assembly and delay in mitotic progression . Promotes stabilization of FXR1 protein by inhibiting FXR1 ubiquitination .

APPLICATION

To ensure optimal assay performance, AREX recommends conducting reagent titration tailored to each testing system for optimal detection results.

WB	1:500 - 1:2000
----	----------------

*Results are sample-specific. Please refer to your local assay conditions and test parameters for reference.

PRODUCT OVERVIEW

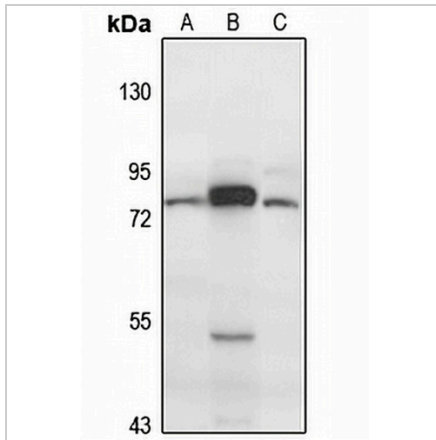
Description	Rabbit polyclonal antibody to CEP63
Specificity	Recognizes endogenous levels of CEP63 protein
Antibody Type	Primary antibody
Immunogen	Recombinant fusion protein of human CEP63. The exact sequence is proprietary.
Purification	The antibody was purified by immunogen affinity chromatography.
Molecular Weight	Predicted: 55; Observed: 73 kD
Form/Buffer	Liquid in 0.42% Potassium phosphate, 0.87% Sodium chloride, pH 7.3, 30% glycerol, and 0.01% sodium azide.
Alternative Names	Centrosomal protein of 63 kDa; Cep63
Gene Symbol	CEP63
Entrez Gene	80254(Human); 28135(Mouse); 300963(Rat)
SwissProt	Q96MT8(Human); Q3UPP8(Mouse); Q4KLY0(Rat)

*AREX continuously optimizes our products. Webpage content may not reflect the latest updates. For inquiries, please contact info@arexbio.com or your local distributor.

*Clone Number, Reactivity, Source/Host and Clonality can be found in the product name and Key Features section above.

DATASHEET**CEP63 Rabbit Polyclonal Antibody**

CAT. NO. APA15274

DATA

Western blot analysis of CEP63 expression in BxPC3 (A), mouse liver (B), rat kidney (C) whole cell lysates. (Predicted band size: 55; 57; 63; 81 kD; Observed band size: 73 kD)

STORAGE

Store at 4°C short term. For long term storage, store at -20°C, avoiding freeze/thaw cycles.

NOTE

For Research Use Only. Not for diagnostic, therapeutics, prophylactic or in vivo use.