

DATASHEET

CEP68 Rabbit Polyclonal Antibody

CAT. NO. APA15275

KEY FEATURES

Target	CEP68	Source / Host	Rabbit
Reactivity	Human, Mouse, Rat	Clonality	Polyclonal
Applications	WB	Conjugation	Unconjugated
Form / Buffer	Liquid in 0.42% Potassium phosphate, 0.87% Sodium chloride, pH 7.3, 30% glycerol, and 0.01% sodium azide.		Storage at -20°C

BACKGROUND

Involved in maintenance of centrosome cohesion, probably as part of a linker structure which prevents centrosome splitting . Required for localization of CDK5RAP2 to the centrosome during interphase . Contributes to CROCC/rootletin filament formation .

APPLICATION

To ensure optimal assay performance, AREX recommends conducting reagent titration tailored to each testing system for optimal detection results.

WB	1:500 - 1:2000
----	----------------

*Results are sample-specific. Please refer to your local assay conditions and test parameters for reference.

PRODUCT OVERVIEW

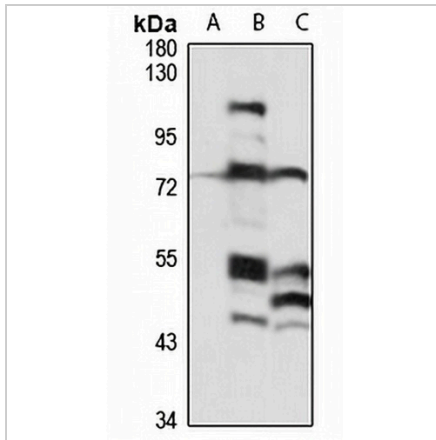
Description	Rabbit polyclonal antibody to CEP68
Specificity	Recognizes endogenous levels of CEP68 protein
Antibody Type	Primary antibody
Immunogen	Recombinant fusion protein of human CEP68. The exact sequence is proprietary.
Purification	The antibody was purified by immunogen affinity chromatography.
Molecular Weight	Predicted: 67; Observed: 76 kD
Form/Buffer	Liquid in 0.42% Potassium phosphate, 0.87% Sodium chloride, pH 7.3, 30% glycerol, and 0.01% sodium azide.
Alternative Names	KIAA0582; Centrosomal protein of 68 kDa; Cep68
Gene Symbol	CEP68
Entrez Gene	23177(Human); 216543(Mouse)
SwissProt	Q76N32(Human); Q8C0D9(Mouse)

*AREX continuously optimizes our products. Webpage content may not reflect the latest updates. For inquiries, please contact info@arexbio.com or your local distributor.

*Clone Number, Reactivity, Source/Host and Clonality can be found in the product name and Key Features section above.

DATASHEET**CEP68 Rabbit Polyclonal Antibody**

CAT. NO. APA15275

DATA

Western blot analysis of CEP68 expression in U251MG (A), mouse brain (B), rat kidney (C) whole cell lysates. (Predicted band size: 67; 81 kD; Observed band size: 76 kD)

STORAGE

Store at 4°C short term. For long term storage, store at -20°C, avoiding freeze/thaw cycles.

NOTE

For Research Use Only. Not for diagnostic, therapeutics, prophylactic or in vivo use.