

## DATASHEET

# CEP85 Rabbit Polyclonal Antibody

CAT. NO. APA15276

### KEY FEATURES

Target	CEP85	Source / Host	Rabbit
Reactivity	Human, Mouse	Clonality	Polyclonal
Applications	WB, IF/ICC	Conjugation	Unconjugated
Form / Buffer	Liquid in 0.42% Potassium phosphate, 0.87% Sodium chloride, pH 7.3, 30% glycerol, and 0.01% sodium azide.		Storage at -20°C

### BACKGROUND

Acts as a regulator of centriole duplication through a direct interaction with STIL, a key factor involved in the early steps of centriole formation. The CEP85-STIL protein complex acts as a modulator of PLK4-driven cytoskeletal rearrangements and directional cell motility. Acts as a negative regulator of NEK2 to maintain the centrosome integrity in interphase. Suppresses centrosome disjunction by inhibiting NEK2 kinase activity.

### APPLICATION

To ensure optimal assay performance, AREX recommends conducting reagent titration tailored to each testing system for optimal detection results.

WB	1:500 - 1:2000
IF/ICC	1:50 - 1:200

\*Results are sample-specific. Please refer to your local assay conditions and test parameters for reference.

### PRODUCT OVERVIEW

Description	Rabbit polyclonal antibody to CEP85
Specificity	Recognizes endogenous levels of CEP85 protein
Antibody Type	Primary antibody
Immunogen	Recombinant fusion protein of human CEP85. The exact sequence is proprietary.
Purification	The antibody was purified by immunogen affinity chromatography.
Molecular Weight	Predicted: 22; Observed: 105 kD
Form/Buffer	Liquid in 0.42% Potassium phosphate, 0.87% Sodium chloride, pH 7.3, 30% glycerol, and 0.01% sodium azide.
Alternative Names	CCDC21; Centrosomal protein of 85 kDa; Cep85; Coiled-coil domain-containing protein 21
Gene Symbol	CEP85
Entrez Gene	64793(Human); 70012(Mouse)
SwissProt	Q6P2H3(Human); Q8BMK0(Mouse)

\*AREX continuously optimizes our products. Webpage content may not reflect the latest updates. For inquiries, please contact [info@arexbio.com](mailto:info@arexbio.com) or your local distributor.

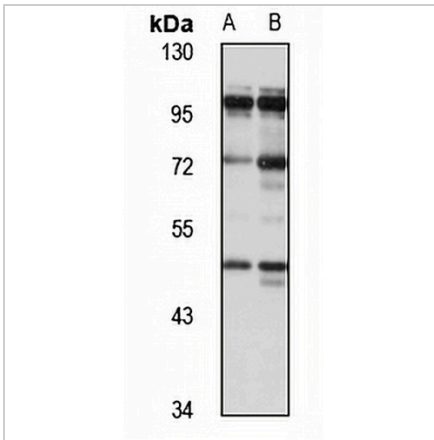
\*Clone Number, Reactivity, Source/Host and Clonality can be found in the product name and Key Features section above.

**DATASHEET**

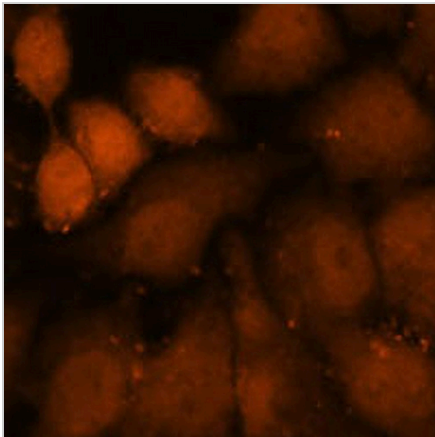
**CEP85 Rabbit Polyclonal Antibody**

CAT. NO. APA15276

**DATA**



Western blot analysis of CEP85 expression in Jurkat (A), HeLa (B) whole cell lysates. (Predicted band size: 22; 80; 85 kD; Observed band size: 105 kD)



Immunofluorescent analysis of CEP85 staining in HeLa cells. Formalin-fixed cells were permeabilized with 0.1% Triton X-100 in TBS for 5-10 minutes and blocked with 3% BSA-PBS for 30 minutes at room temperature. Cells were probed with the primary antibody in 3% BSA-PBS and incubated overnight at 4 °C in a humidified chamber. Cells were washed with PBST and incubated with a AREX® Fluor 594-conjugated secondary antibody (red) in PBS at room temperature in the dark. DAPI was used to stain the cell nuclei (blue).

**STORAGE**

Store at 4°C short term. For long term storage, store at -20°C, avoiding freeze/thaw cycles.

**NOTE**

For Research Use Only. Not for diagnostic, therapeutics, prophylactic or in vivo use.