

DATASHEET

CERCAM Rabbit Polyclonal Antibody

CAT. NO. APA15277

KEY FEATURES

Target	CERCAM	Source / Host	Rabbit
Reactivity	Human	Clonality	Polyclonal
Applications	WB	Conjugation	Unconjugated
Form / Buffer	Liquid in 0.42% Potassium phosphate, 0.87% Sodium chloride, pH 7.3, 30% glycerol, and 0.01% sodium azide.		Storage at -20°C

BACKGROUND

Probable cell adhesion protein involved in leukocyte transmigration across the blood-brain barrier. Does not express any beta-galactosyltransferase activity in vitro.

APPLICATION

To ensure optimal assay performance, AREX recommends conducting reagent titration tailored to each testing system for optimal detection results.

WB	1:500 - 1:2000
----	----------------

*Results are sample-specific. Please refer to your local assay conditions and test parameters for reference.

PRODUCT OVERVIEW

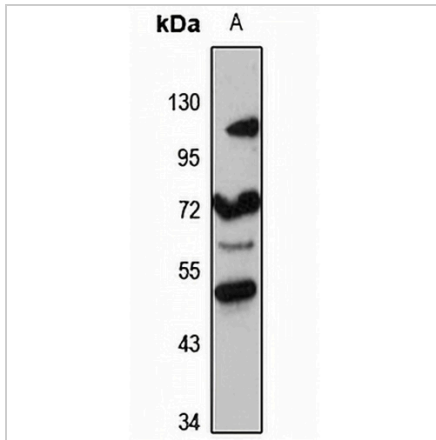
Description	Rabbit polyclonal antibody to CERCAM
Specificity	Recognizes endogenous levels of CERCAM protein
Antibody Type	Primary antibody
Immunogen	Recombinant fusion protein of human CERCAM. The exact sequence is proprietary.
Purification	The antibody was purified by immunogen affinity chromatography.
Molecular Weight	Predicted: 59; Observed: 75 kD
Form/Buffer	Liquid in 0.42% Potassium phosphate, 0.87% Sodium chloride, pH 7.3, 30% glycerol, and 0.01% sodium azide.
Alternative Names	CEECAM1; GLT25D3; KIAA1502; Probable inactive glycosyltransferase 25 family member 3; Cerebral endothelial cell adhesion molecule
Gene Symbol	CERCAM
Entrez Gene	51148(Human)
SwissProt	Q5T4B2(Human)

*AREX continuously optimizes our products. Webpage content may not reflect the latest updates. For inquiries, please contact info@arexbio.com or your local distributor.

*Clone Number, Reactivity, Source/Host and Clonality can be found in the product name and Key Features section above.

DATASHEET**CERCAM Rabbit Polyclonal Antibody**

CAT. NO. APA15277

DATA

Western blot analysis of CERCAM expression in HEK293T (A) whole cell lysates. (Predicted band size: 59; 67 kD; Observed band size: 75 kD)

STORAGE

Store at 4°C short term. For long term storage, store at -20°C, avoiding freeze/thaw cycles.

NOTE

For Research Use Only. Not for diagnostic, therapeutics, prophylactic or in vivo use.