

DATASHEET

Ceramide Kinase Rabbit Polyclonal Antibody

CAT. NO. APA15278

KEY FEATURES

Target	Ceramide Kinase	Source / Host	Rabbit
Reactivity	Human, Mouse, Rat	Clonality	Polyclonal
Applications	WB	Conjugation	Unconjugated
Form / Buffer	Liquid in 0.42% Potassium phosphate, 0.87% Sodium chloride, pH 7.3, 30% glycerol, and 0.01% sodium azide.		Storage at-20°C

BACKGROUND

Catalyzes specifically the phosphorylation of ceramide to form ceramide 1-phosphate . Acts efficiently on natural and analog ceramides (C6, C8, C16 ceramides, and C8-dihydroceramide), to a lesser extent on C2-ceramide and C6-dihydroceramide, but not on other lipids, such as various sphingosines . Shows a greater preference for D-erythro isomer of ceramides . Binds phosphoinositides .

APPLICATION

To ensure optimal assay performance, AREX recommends conducting reagent titration tailored to each testing system for optimal detection results.

WB	1:500 - 1:2000
----	----------------

*Results are sample-specific. Please refer to your local assay conditions and test parameters for reference.

PRODUCT OVERVIEW

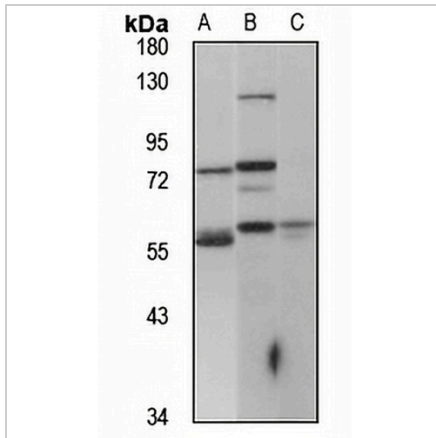
Description	Rabbit polyclonal antibody to Ceramide Kinase
Specificity	Recognizes endogenous levels of Ceramide Kinase protein
Antibody Type	Primary antibody
Immunogen	KLH-conjugated synthetic peptide of human Ceramide Kinase. The exact sequence is proprietary.
Purification	The antibody was purified by immunogen affinity chromatography.
Molecular Weight	Predicted: 37; Observed: 60 kD
Form/Buffer	Liquid in 0.42% Potassium phosphate, 0.87% Sodium chloride, pH 7.3, 30% glycerol, and 0.01% sodium azide.
Alternative Names	KIAA1646; Ceramide kinase; hCERK; Acylsphingosine kinase; Lipid kinase 4; LK4
Gene Symbol	CERK
Entrez Gene	64781(Human); 223753(Mouse)
SwissProt	Q8TCT0(Human); Q8K4Q7(Mouse)

*AREX continuously optimizes our products. Webpage content may not reflect the latest updates. For inquiries, please contact info@arexbio.com or your local distributor.

*Clone Number, Reactivity, Source/Host and Clonality can be found in the product name and Key Features section above.

DATASHEET**Ceramide Kinase Rabbit Polyclonal Antibody**

CAT. NO. APA15278

DATA

Western blot analysis of Ceramide Kinase expression in A549 (A), mouse testis (B), rat thymus (C) whole cell lysates. (Predicted band size: 37; 59 kD; Observed band size: 60 kD)

STORAGE

Store at 4°C short term. For long term storage, store at -20°C, avoiding freeze/thaw cycles.

NOTE

For Research Use Only. Not for diagnostic, therapeutics, prophylactic or in vivo use.