

DATASHEET

CHAD Rabbit Polyclonal Antibody

CAT. NO. APA15283

KEY FEATURES

Target	CHAD	Source / Host	Rabbit
Reactivity	Human, Mouse, Rat	Clonality	Polyclonal
Applications	WB	Conjugation	Unconjugated
Form / Buffer	Liquid in 0.42% Potassium phosphate, 0.87% Sodium chloride, pH 7.3, 30% glycerol, and 0.01% sodium azide.		Storage at -20°C

BACKGROUND

Promotes attachment of chondrocytes, fibroblasts, and osteoblasts. This binding is mediated (at least for chondrocytes and fibroblasts) by the integrin alpha(2)beta(1). May play an important role in the regulation of chondrocyte growth and proliferation.

APPLICATION

To ensure optimal assay performance, AREX recommends conducting reagent titration tailored to each testing system for optimal detection results.

WB	1:500 - 1:2000
----	----------------

*Results are sample-specific. Please refer to your local assay conditions and test parameters for reference.

PRODUCT OVERVIEW

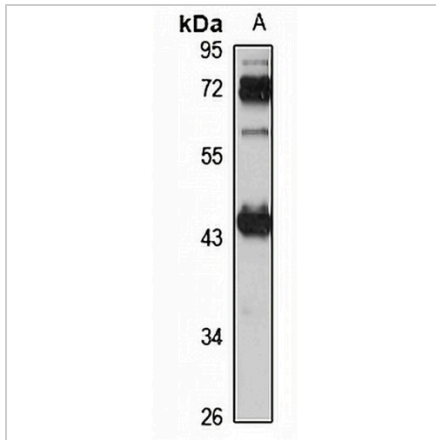
Description	Rabbit polyclonal antibody to CHAD
Specificity	Recognizes endogenous levels of CHAD protein
Antibody Type	Primary antibody
Immunogen	Recombinant fusion protein of human CHAD. The exact sequence is proprietary.
Purification	The antibody was purified by immunogen affinity chromatography.
Molecular Weight	Predicted: 40 kD; Observed: 41 kD
Form/Buffer	Liquid in 0.42% Potassium phosphate, 0.87% Sodium chloride, pH 7.3, 30% glycerol, and 0.01% sodium azide.
Alternative Names	SLRR4A; Chondroadherin; Cartilage leucine-rich protein
Gene Symbol	CHAD
Entrez Gene	1101(Human); 12643(Mouse); 29195(Rat)
SwissProt	O15335(Human); O55226(Mouse); O70210(Rat)

*AREX continuously optimizes our products. Webpage content may not reflect the latest updates. For inquiries, please contact info@arexbio.com or your local distributor.

*Clone Number, Reactivity, Source/Host and Clonality can be found in the product name and Key Features section above.

DATASHEET**CHAD Rabbit Polyclonal Antibody**

CAT. NO. APA15283

DATA

Western blot analysis of CHAD expression in MCF7 (A) whole cell lysates. (Predicted band size: 40 kD; Observed band size: 41 kD)

STORAGE

Store at 4°C short term. For long term storage, store at -20°C, avoiding freeze/thaw cycles.

NOTE

For Research Use Only. Not for diagnostic, therapeutics, prophylactic or in vivo use.