

DATASHEET

CHCHD1 Rabbit Polyclonal Antibody

CAT. NO. APA15285

KEY FEATURES

Target	CHCHD1	Source / Host	Rabbit
Reactivity	Human, Mouse	Clonality	Polyclonal
Applications	WB	Conjugation	Unconjugated
Form / Buffer	Liquid in 0.42% Potassium phosphate, 0.87% Sodium chloride, pH 7.3, 30% glycerol, and 0.01% sodium azide.		Storage at-20°C

BACKGROUND

Small ribosomal subunit protein mS37 (CHCHD1), also known as 28S ribosomal protein S37, mitochondrial, MRP-S37, Coiled-coil-helix-coiled-coil-helix domain-containing protein 1. Belongs to the mitochondrion-specific ribosomal protein mS37 family
Subunit: Component of the mitochondrial small ribosomal subunit (mt-SSU). Mature mammalian 55S mitochondrial ribosomes consist of a small (28S) and a large (39S) subunit. The 28S small subunit contains a 12S ribosomal RNA (12S mt-rRNA) and 30 different proteins. The 39S large subunit contains a 16S rRNA (16S mt-rRNA), a copy of mitochondrial valine transfer RNA (mt-tRNA(Val)), which plays an integral structural role, and 52 different proteins
Subcellular location: Mitochondrion; Nucleus

APPLICATION

To ensure optimal assay performance, AREX recommends conducting reagent titration tailored to each testing system for optimal detection results.

WB	1:500 - 1:2000
----	----------------

*Results are sample-specific. Please refer to your local assay conditions and test parameters for reference.

PRODUCT OVERVIEW

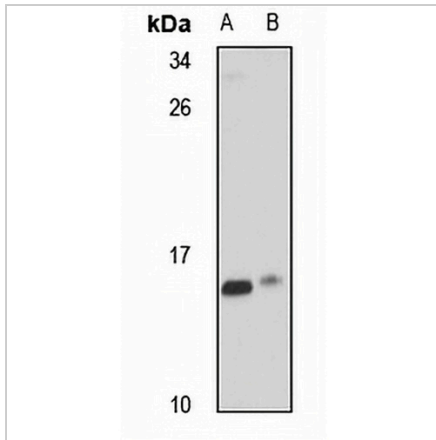
Description	Rabbit polyclonal antibody to CHCHD1
Specificity	Recognizes endogenous levels of CHCHD1 protein
Antibody Type	Primary antibody
Immunogen	Recombinant fusion protein of human CHCHD1. The exact sequence is proprietary.
Purification	The antibody was purified by immunogen affinity chromatography.
Molecular Weight	Predicted: 13 kD; Observed: 13 kD
Form/Buffer	Liquid in 0.42% Potassium phosphate, 0.87% Sodium chloride, pH 7.3, 30% glycerol, and 0.01% sodium azide.
Alternative Names	C10orf34; MRPS37; Coiled-coil-helix-coiled-coil-helix domain-containing protein 1; 28S ribosomal protein S37 mitochondrial; MRP-S37; Nuclear protein C2360
Gene Symbol	CHCHD1
Entrez Gene	118487(Human); 66121(Mouse)
SwissProt	Q96BP2(Human); Q9CQA6(Mouse)

*AREX continuously optimizes our products. Webpage content may not reflect the latest updates. For inquiries, please contact info@arexbio.com or your local distributor.

*Clone Number, Reactivity, Source/Host and Clonality can be found in the product name and Key Features section above.

DATASHEET**CHCHD1 Rabbit Polyclonal Antibody**

CAT. NO. APA15285

DATA

Western blot analysis of CHCHD1 expression in HEK293T (A), mouse liver (B) whole cell lysates. (Predicted band size: 13 kD; Observed band size: 13 kD)

STORAGE

Store at 4°C short term. For long term storage, store at -20°C, avoiding freeze/thaw cycles.

NOTE

For Research Use Only. Not for diagnostic, therapeutics, prophylactic or in vivo use.