

DATASHEET

CHCHD4 Rabbit Polyclonal Antibody

CAT. NO. APA15287

KEY FEATURES

Target	CHCHD4	Source / Host	Rabbit
Reactivity	Human, Mouse, Rat	Clonality	Polyclonal
Applications	WB, IHC	Conjugation	Unconjugated
Form / Buffer	Liquid in 0.42% Potassium phosphate, 0.87% Sodium chloride, pH 7.3, 30% glycerol, and 0.01% sodium azide.		Storage at-20°C

BACKGROUND

Central component of a redox-sensitive mitochondrial intermembrane space import machinery which is required for the biogenesis of respiratory chain complexes. Functions as chaperone and catalyzes the formation of disulfide bonds in substrate proteins, such as COX17, COX19, MICU1 and COA7. Required for the import and folding of small cysteine-containing proteins (small Tim) in the mitochondrial intermembrane space (IMS). Required for the import of COA7 in the IMS. Precursor proteins to be imported into the IMS are translocated in their reduced form into the mitochondria.

APPLICATION

To ensure optimal assay performance, AREX recommends conducting reagent titration tailored to each testing system for optimal detection results.

WB	1:500 - 1:2000
IHC	1:50 - 1:200

*Results are sample-specific. Please refer to your local assay conditions and test parameters for reference.

PRODUCT OVERVIEW

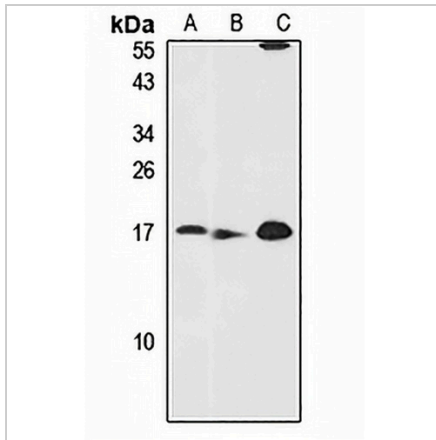
Description	Rabbit polyclonal antibody to CHCHD4
Specificity	Recognizes endogenous levels of CHCHD4 protein
Antibody Type	Primary antibody
Immunogen	Recombinant fusion protein of human CHCHD4. The exact sequence is proprietary.
Purification	The antibody was purified by immunogen affinity chromatography.
Molecular Weight	Predicted: 15; Observed: 16 kD
Form/Buffer	Liquid in 0.42% Potassium phosphate, 0.87% Sodium chloride, pH 7.3, 30% glycerol, and 0.01% sodium azide.
Alternative Names	MIA40; Mitochondrial intermembrane space import and assembly protein 40; Coiled-coil-helix-coiled-coil-helix domain-containing protein 4
Gene Symbol	CHCHD4
Entrez Gene	131474(Human); 72170(Mouse); 100361898; 312559(Rat)
SwissProt	Q8N4Q1(Human); Q8VEA4(Mouse); Q5BJN5(Rat)

*AREX continuously optimizes our products. Webpage content may not reflect the latest updates. For inquiries, please contact info@arexbio.com or your local distributor.

*Clone Number, Reactivity, Source/Host and Clonality can be found in the product name and Key Features section above.

DATASHEET**CHCHD4 Rabbit Polyclonal Antibody**

CAT. NO. APA15287

DATA

Western blot analysis of CHCHD4 expression in HEK293T (A), mouse liver (B), mouse heart (C) whole cell lysates. (Predicted band size: 15; 17 kD; Observed band size: 16 kD)

STORAGE

Store at 4°C short term. For long term storage, store at -20°C, avoiding freeze/thaw cycles.

NOTE

For Research Use Only. Not for diagnostic, therapeutics, prophylactic or in vivo use.