

**DATASHEET**

**CHCHD6 Rabbit Polyclonal Antibody**

CAT. NO. APA15288

**KEY FEATURES**

Target	CHCHD6	Source / Host	Rabbit
Reactivity	Human	Clonality	Polyclonal
Applications	WB	Conjugation	Unconjugated
Form / Buffer	Liquid in 0.42% Potassium phosphate, 0.87% Sodium chloride, pH 7.3, 30% glycerol, and 0.01% sodium azide.		Storage at -20°C

**BACKGROUND**

Component of the MICOS complex, a large protein complex of the mitochondrial inner membrane that plays crucial roles in the maintenance of crista junctions, inner membrane architecture, and formation of contact sites to the outer membrane.

**APPLICATION**

To ensure optimal assay performance, AREX recommends conducting reagent titration tailored to each testing system for optimal detection results.

WB	1:500 - 1:2000
----	----------------

\*Results are sample-specific. Please refer to your local assay conditions and test parameters for reference.

**PRODUCT OVERVIEW**

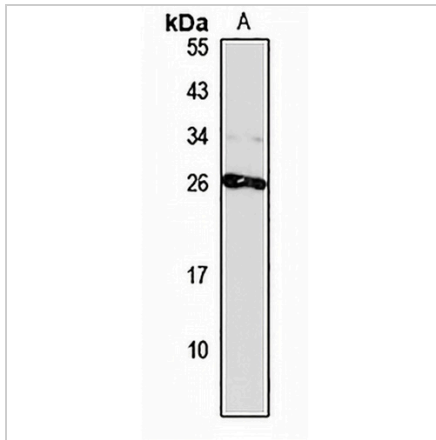
Description	Rabbit polyclonal antibody to CHCHD6
Specificity	Recognizes endogenous levels of CHCHD6 protein
Antibody Type	Primary antibody
Immunogen	Recombinant fusion protein of human CHCHD6. The exact sequence is proprietary.
Purification	The antibody was purified by immunogen affinity chromatography.
Molecular Weight	Predicted: 26 kD; Observed: 26 kD
Form/Buffer	Liquid in 0.42% Potassium phosphate, 0.87% Sodium chloride, pH 7.3, 30% glycerol, and 0.01% sodium azide.
Alternative Names	CHCM1; Coiled-coil-helix-coiled-coil-helix domain-containing protein 6 mitochondrial; Coiled-coil-helix cristae morphology protein 1
Gene Symbol	CHCHD6
Entrez Gene	84303(Human)
SwissProt	Q9BRQ6(Human)

\*AREX continuously optimizes our products. Webpage content may not reflect the latest updates. For inquiries, please contact [info@arexbio.com](mailto:info@arexbio.com) or your local distributor.

\*Clone Number, Reactivity, Source/Host and Clonality can be found in the product name and Key Features section above.

**DATASHEET****CHCHD6 Rabbit Polyclonal Antibody**

CAT. NO. APA15288

**DATA**

Western blot analysis of CHCHD6 expression in HeLa (A) whole cell lysates. (Predicted band size: 26 kD; Observed band size: 26 kD)

**STORAGE**

Store at 4°C short term. For long term storage, store at -20°C, avoiding freeze/thaw cycles.

**NOTE**

For Research Use Only. Not for diagnostic, therapeutics, prophylactic or in vivo use.