

DATASHEET

Choline Kinase alpha Rabbit Polyclonal Antibody

CAT. NO. APA15292

KEY FEATURES

Target	Choline Kinase alpha	Source / Host	Rabbit
Reactivity	Human, Mouse, Rat	Clonality	Polyclonal
Applications	WB	Conjugation	Unconjugated
Form / Buffer	Liquid in 0.42% Potassium phosphate, 0.87% Sodium chloride, pH 7.3, 30% glycerol, and 0.01% sodium azide.		Storage at -20°C

BACKGROUND

Plays a key role in phospholipid biosynthesis by catalyzing the phosphorylation of free choline to phosphocholine, the first step in phosphatidylcholine biosynthesis . Also phosphorylates ethanolamine, thereby contributing to phosphatidylethanolamine biosynthesis . Has higher activity with choline . May contribute to tumor cell growth .

APPLICATION

To ensure optimal assay performance, AREX recommends conducting reagent titration tailored to each testing system for optimal detection results.

WB	1:500 - 1:2000
----	----------------

*Results are sample-specific. Please refer to your local assay conditions and test parameters for reference.

PRODUCT OVERVIEW

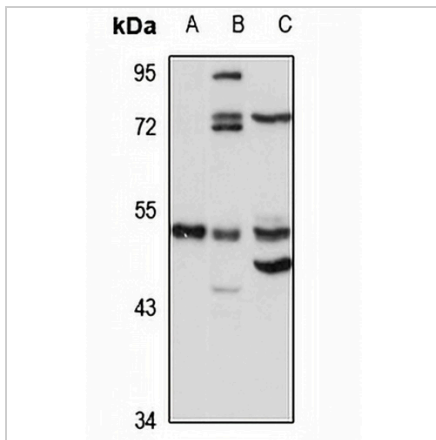
Description	Rabbit polyclonal antibody to Choline Kinase alpha
Specificity	Recognizes endogenous levels of Choline Kinase alpha protein
Antibody Type	Primary antibody
Immunogen	Recombinant fusion protein of human Choline Kinase alpha. The exact sequence is proprietary.
Purification	The antibody was purified by immunogen affinity chromatography.
Molecular Weight	Predicted: 50; Observed: 52 kD
Form/Buffer	Liquid in 0.42% Potassium phosphate, 0.87% Sodium chloride, pH 7.3, 30% glycerol, and 0.01% sodium azide.
Alternative Names	CHK; CKI; Choline kinase alpha; CK; CHETK-alpha; Ethanolamine kinase; EK
Gene Symbol	CHKA
Entrez Gene	1119(Human); 12660(Mouse); 29194(Rat)
SwissProt	P35790(Human); O54804(Mouse); Q01134(Rat)

*AREX continuously optimizes our products. Webpage content may not reflect the latest updates. For inquiries, please contact info@arexbio.com or your local distributor.

*Clone Number, Reactivity, Source/Host and Clonality can be found in the product name and Key Features section above.

DATASHEET**Choline Kinase alpha Rabbit Polyclonal Antibody**

CAT. NO. APA15292

DATA

Western blot analysis of Choline Kinase alpha expression in Jurkat (A), mouse brain (B), rat testis (C) whole cell lysates. (Predicted band size: 50; 52 kD; Observed band size: 52 kD)

STORAGE

Store at 4°C short term. For long term storage, store at -20°C, avoiding freeze/thaw cycles.

NOTE

For Research Use Only. Not for diagnostic, therapeutics, prophylactic or in vivo use.