

**DATASHEET**

**CHMP3 Rabbit Polyclonal Antibody**

CAT. NO. APA15294

**KEY FEATURES**

Target	CHMP3	Source / Host	Rabbit
Reactivity	Human, Mouse, Rat	Clonality	Polyclonal
Applications	WB	Conjugation	Unconjugated
Form / Buffer	Liquid in 0.42% Potassium phosphate, 0.87% Sodium chloride, pH 7.3, 30% glycerol, and 0.01% sodium azide.		Storage at -20°C

**BACKGROUND**

Probable core component of the endosomal sorting required for transport complex III (ESCRT-III) which is involved in multivesicular bodies (MVBs) formation and sorting of endosomal cargo proteins into MVBs. MVBs contain intraluminal vesicles (ILVs) that are generated by invagination and scission from the limiting membrane of the endosome and mostly are delivered to lysosomes enabling degradation of membrane proteins, such as stimulated growth factor receptors, lysosomal enzymes and lipids. The MVB pathway appears to require the sequential function of ESCRT-O, -I, -II and -III complexes. ESCRT-III proteins mostly dissociate from the invaginating membrane before the ILV is released.

**APPLICATION**

To ensure optimal assay performance, AREX recommends conducting reagent titration tailored to each testing system for optimal detection results.

WB	1:500 - 1:2000
----	----------------

\*Results are sample-specific. Please refer to your local assay conditions and test parameters for reference.

**PRODUCT OVERVIEW**

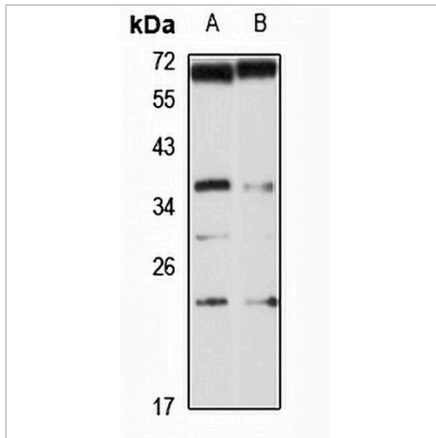
Description	Rabbit polyclonal antibody to CHMP3
Specificity	Recognizes endogenous levels of CHMP3 protein
Antibody Type	Primary antibody
Immunogen	Recombinant fusion protein of human CHMP3. The exact sequence is proprietary.
Purification	The antibody was purified by immunogen affinity chromatography.
Molecular Weight	Predicted: 17; Observed: 23 kD
Form/Buffer	Liquid in 0.42% Potassium phosphate, 0.87% Sodium chloride, pH 7.3, 30% glycerol, and 0.01% sodium azide.
Alternative Names	CGI149; NEDF; VPS24; Charged multivesicular body protein 3; Chromatin-modifying protein 3; Neuroendocrine differentiation factor; Vacuolar protein sorting-associated protein 24; hVps24
Gene Symbol	CHMP3
Entrez Gene	100526767; 51652(Human); 66700(Mouse); 282834(Rat)
SwissProt	Q9Y3E7(Human); Q9CQ10(Mouse); Q8CGS4(Rat)

\*AREX continuously optimizes our products. Webpage content may not reflect the latest updates. For inquiries, please contact [info@arexbio.com](mailto:info@arexbio.com) or your local distributor.

\*Clone Number, Reactivity, Source/Host and Clonality can be found in the product name and Key Features section above.

**DATASHEET****CHMP3 Rabbit Polyclonal Antibody**

CAT. NO. APA15294

**DATA**

Western blot analysis of CHMP3 expression in HEK293T (A), SW480 (B) whole cell lysates. (Predicted band size: 17; 20; 25; 28 kD; Observed band size: 23 kD)

**STORAGE**

Store at 4°C short term. For long term storage, store at -20°C, avoiding freeze/thaw cycles.

**NOTE**

For Research Use Only. Not for diagnostic, therapeutics, prophylactic or in vivo use.