

DATASHEET

CHRM3 Rabbit Polyclonal Antibody

CAT. NO. APA15298

KEY FEATURES

Target	CHRM3	Source / Host	Rabbit
Reactivity	Human, Mouse, Rat	Clonality	Polyclonal
Applications	WB	Conjugation	Unconjugated
Form / Buffer	Liquid in 0.42% Potassium phosphate, 0.87% Sodium chloride, pH 7.3, 30% glycerol, and 0.01% sodium azide.		Storage at -20°C

BACKGROUND

The muscarinic acetylcholine receptor mediates various cellular responses, including inhibition of adenylate cyclase, breakdown of phosphoinositides and modulation of potassium channels through the action of G proteins. Primary transducing effect is Pi turnover.

APPLICATION

To ensure optimal assay performance, AREX recommends conducting reagent titration tailored to each testing system for optimal detection results.

WB	1:500 - 1:2000
----	----------------

*Results are sample-specific. Please refer to your local assay conditions and test parameters for reference.

PRODUCT OVERVIEW

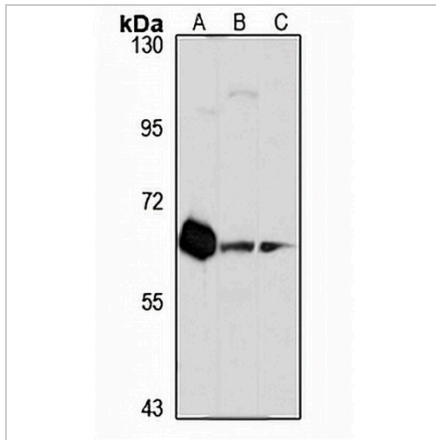
Description	Rabbit polyclonal antibody to CHRM3
Specificity	Recognizes endogenous levels of CHRM3 protein
Antibody Type	Primary antibody
Immunogen	Recombinant fusion protein of human CHRM3. The exact sequence is proprietary.
Purification	The antibody was purified by immunogen affinity chromatography.
Molecular Weight	Predicted: 66 kD; Observed: 66 kD
Form/Buffer	Liquid in 0.42% Potassium phosphate, 0.87% Sodium chloride, pH 7.3, 30% glycerol, and 0.01% sodium azide.
Alternative Names	Muscarinic acetylcholine receptor M3
Gene Symbol	CHRM3
Entrez Gene	1131(Human); 12671(Mouse); 24260(Rat)
SwissProt	P20309(Human); Q9ERZ3(Mouse); P08483(Rat)

*AREX continuously optimizes our products. Webpage content may not reflect the latest updates. For inquiries, please contact info@arexbio.com or your local distributor.

*Clone Number, Reactivity, Source/Host and Clonality can be found in the product name and Key Features section above.

DATASHEET**CHRM3 Rabbit Polyclonal Antibody**

CAT. NO. APA15298

DATA

Western blot analysis of CHRM3 expression in SHSY5Y (A), mouse brain (B), rat heart (C) whole cell lysates. (Predicted band size: 66 kD; Observed band size: 66 kD)

STORAGE

Store at 4°C short term. For long term storage, store at -20°C, avoiding freeze/thaw cycles.

NOTE

For Research Use Only. Not for diagnostic, therapeutics, prophylactic or in vivo use.