

**DATASHEET**

**Creatine Kinase B Rabbit Polyclonal Antibody**

CAT. NO. APA15310

**KEY FEATURES**

Target	Creatine Kinase B	Source / Host	Rabbit
Reactivity	Human, Mouse, Rat	Clonality	Polyclonal
Applications	WB	Conjugation	Unconjugated
Form / Buffer	Liquid in 0.42% Potassium phosphate, 0.87% Sodium chloride, pH 7.3, 30% glycerol, and 0.01% sodium azide.		Storage at -20°C

**BACKGROUND**

Reversibly catalyzes the transfer of phosphate between ATP and various phosphogens (e.g. creatine phosphate) . Creatine kinase isoenzymes play a central role in energy transduction in tissues with large, fluctuating energy demands, such as skeletal muscle, heart, brain and spermatozoa (Probable). Acts as a key regulator of adaptive thermogenesis as part of the futile creatine cycle: localizes to the mitochondria of thermogenic fat cells and acts by mediating phosphorylation of creatine to initiate a futile cycle of creatine phosphorylation and dephosphorylation . During the futile creatine cycle, creatine and N-phosphocreatine are in a futile cycle, which dissipates the high energy charge of N-phosphocreatine as heat without performing any mechanical or chemical work .

**APPLICATION**

To ensure optimal assay performance, AREX recommends conducting reagent titration tailored to each testing system for optimal detection results.

WB	1:500 - 1:2000
----	----------------

\*Results are sample-specific. Please refer to your local assay conditions and test parameters for reference.

**PRODUCT OVERVIEW**

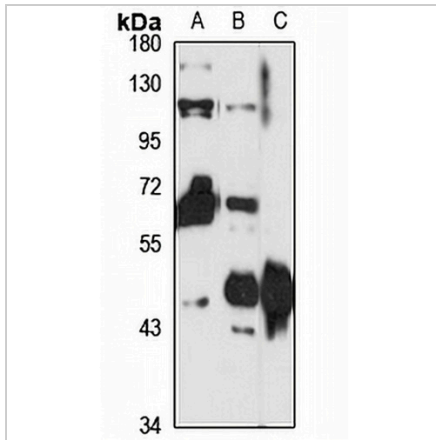
Description	Rabbit polyclonal antibody to Creatine Kinase B
Specificity	Recognizes endogenous levels of Creatine Kinase B protein
Antibody Type	Primary antibody
Immunogen	Recombinant fusion protein of human Creatine Kinase B. The exact sequence is proprietary.
Purification	The antibody was purified by immunogen affinity chromatography.
Molecular Weight	Predicted: 42 kD; Observed: 43 kD
Form/Buffer	Liquid in 0.42% Potassium phosphate, 0.87% Sodium chloride, pH 7.3, 30% glycerol, and 0.01% sodium azide.
Alternative Names	CKBB; Creatine kinase B-type; B-CK; Creatine kinase B chain
Gene Symbol	CKB
Entrez Gene	1152(Human); 12709(Mouse); 24264(Rat)
SwissProt	P12277(Human); Q04447(Mouse); P07335(Rat)

\*AREX continuously optimizes our products. Webpage content may not reflect the latest updates. For inquiries, please contact [info@arexbio.com](mailto:info@arexbio.com) or your local distributor.

\*Clone Number, Reactivity, Source/Host and Clonality can be found in the product name and Key Features section above.

**DATASHEET****Creatine Kinase B Rabbit Polyclonal Antibody**

CAT. NO. APA15310

**DATA**

Western blot analysis of Creatine Kinase B expression in HT29 (A), mouse brain (B), rat spinal cord (C) whole cell lysates. (Predicted band size: 42 kD; Observed band size: 43 kD)

**STORAGE**

Store at 4°C short term. For long term storage, store at -20°C, avoiding freeze/thaw cycles.

**NOTE**

For Research Use Only. Not for diagnostic, therapeutics, prophylactic or in vivo use.