

DATASHEET

PCLN-1 Rabbit Polyclonal Antibody

CAT. NO. APA15318

KEY FEATURES

Target	PCLN-1	Source / Host	Rabbit
Reactivity	Human, Mouse, Rat	Clonality	Polyclonal
Applications	WB	Conjugation	Unconjugated
Form / Buffer	Liquid in 0.42% Potassium phosphate, 0.87% Sodium chloride, pH 7.3, 30% glycerol, and 0.01% sodium azide.		Storage at -20°C

BACKGROUND

Forms paracellular channels: coassembles with CLDN19 into tight junction strands with cation-selective channels through the strands, conveying epithelial permeability in a process known as paracellular tight junction permeability. Involved in the maintenance of ion gradients along the nephron. In the thick ascending limb (TAL) of Henle's loop, facilitates sodium paracellular permeability from the interstitial compartment to the lumen, contributing to the lumen-positive transepithelial potential that drives paracellular magnesium and calcium reabsorption.

APPLICATION

To ensure optimal assay performance, AREX recommends conducting reagent titration tailored to each testing system for optimal detection results.

WB	1:500 - 1:2000
----	----------------

*Results are sample-specific. Please refer to your local assay conditions and test parameters for reference.

PRODUCT OVERVIEW

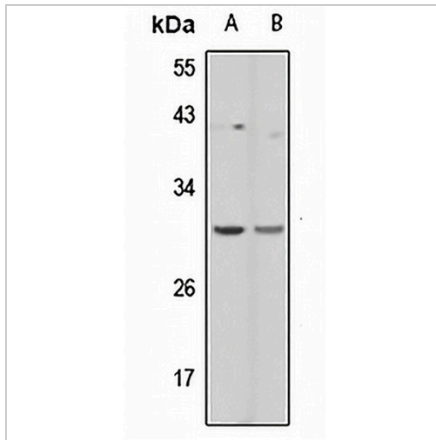
Description	Rabbit polyclonal antibody to PCLN-1
Specificity	Recognizes endogenous levels of PCLN-1 protein
Antibody Type	Primary antibody
Immunogen	KLH-conjugated synthetic peptide of human PCLN-1. The exact sequence is proprietary.
Purification	The antibody was purified by immunogen affinity chromatography.
Molecular Weight	Predicted: 33 kD; Observed: 30 kD
Form/Buffer	Liquid in 0.42% Potassium phosphate, 0.87% Sodium chloride, pH 7.3, 30% glycerol, and 0.01% sodium azide.
Alternative Names	PCLN1; Claudin-16; Paracellin-1; PCLN-1
Gene Symbol	CLDN16
Entrez Gene	10686(Human); 114141(Mouse); 155268(Rat)
SwissProt	Q9Y5I7(Human); Q925N4(Mouse); Q91Y55(Rat)

*AREX continuously optimizes our products. Webpage content may not reflect the latest updates. For inquiries, please contact info@arexbio.com or your local distributor.

*Clone Number, Reactivity, Source/Host and Clonality can be found in the product name and Key Features section above.

DATASHEET**PCLN-1 Rabbit Polyclonal Antibody**

CAT. NO. APA15318

DATA

Western blot analysis of PCLN-1 expression in HEK293T (A), mouse kidney (B) whole cell lysates. (Predicted band size: 33 kD; Observed band size: 30 kD)

STORAGE

Store at 4°C short term. For long term storage, store at -20°C, avoiding freeze/thaw cycles.

NOTE

For Research Use Only. Not for diagnostic, therapeutics, prophylactic or in vivo use.