

**DATASHEET**

**CLEC1B Rabbit Polyclonal Antibody**

CAT. NO. APA15322

**KEY FEATURES**

Target	CLEC1B	Source / Host	Rabbit
Reactivity	Human, Mouse	Clonality	Polyclonal
Applications	WB	Conjugation	Unconjugated
Form / Buffer	Liquid in 0.42% Potassium phosphate, 0.87% Sodium chloride, pH 7.3, 30% glycerol, and 0.01% sodium azide.		Storage at -20°C

**BACKGROUND**

C-type lectin-like receptor that serves as a platelet receptor for the lymphatic endothelial marker PDPN . Plays an essential role in blood/lymphatic vessel separation and thrombus formation through homophilic association . Acts as a negative regulator of lymphatic endothelial cell behavior by inhibiting proliferation, migration, and tube formation . Upon ligand binding, triggers a signaling cascade via sequential activation of SRC and SYK tyrosine kinases, leading to activation of PLCG2 . Through this pathway, mediates platelet adhesion, aggregation, and secretion in response to PDPN-expressing cells. During embryonic development, plays a central role in cerebrovascular formation and blood/lymphatic vessel separation.

**APPLICATION**

To ensure optimal assay performance, AREX recommends conducting reagent titration tailored to each testing system for optimal detection results.

WB	1:500 - 1:2000
----	----------------

\*Results are sample-specific. Please refer to your local assay conditions and test parameters for reference.

**PRODUCT OVERVIEW**

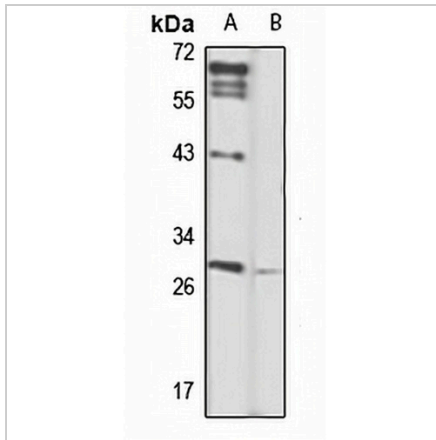
Description	Rabbit polyclonal antibody to CLEC1B
Specificity	Recognizes endogenous levels of CLEC1B protein
Antibody Type	Primary antibody
Immunogen	Recombinant fusion protein of human CLEC1B. The exact sequence is proprietary.
Purification	The antibody was purified by immunogen affinity chromatography.
Molecular Weight	Predicted: 23; Observed: 27 kD
Form/Buffer	Liquid in 0.42% Potassium phosphate, 0.87% Sodium chloride, pH 7.3, 30% glycerol, and 0.01% sodium azide.
Alternative Names	CLEC2; C-type lectin domain family 1 member B; C-type lectin-like receptor 2; CLEC-2
Gene Symbol	CLEC1B
Entrez Gene	51266(Human); 56760(Mouse)
SwissProt	Q9P126(Human); Q9JL99(Mouse)

\*AREX continuously optimizes our products. Webpage content may not reflect the latest updates. For inquiries, please contact [info@arexbio.com](mailto:info@arexbio.com) or your local distributor.

\*Clone Number, Reactivity, Source/Host and Clonality can be found in the product name and Key Features section above.

**DATASHEET****CLEC1B Rabbit Polyclonal Antibody**

CAT. NO. APA15322

**DATA**

Western blot analysis of CLEC1B expression in HepG2 (A), mouse lung (B) whole cell lysates. (Predicted band size: 23; 26 kD; Observed band size: 27 kD)

**STORAGE**

Store at 4°C short term. For long term storage, store at -20°C, avoiding freeze/thaw cycles.

**NOTE**

For Research Use Only. Not for diagnostic, therapeutics, prophylactic or in vivo use.