

DATASHEET

LLT1 Rabbit Polyclonal Antibody

CAT. NO. APA15323

KEY FEATURES

Target	LLT1	Source / Host	Rabbit
Reactivity	Human, Mouse	Clonality	Polyclonal
Applications	WB	Conjugation	Unconjugated
Form / Buffer	Liquid in 0.42% Potassium phosphate, 0.87% Sodium chloride, pH 7.3, 30% glycerol, and 0.01% sodium azide.		Storage at -20°C

BACKGROUND

Receptor for KLRB1 that protects target cells against natural killer cell-mediated lysis . Inhibits osteoclast formation . Inhibits bone resorption . Modulates the release of interferon-gamma . Binds high molecular weight sulfated glycosaminoglycans .

APPLICATION

To ensure optimal assay performance, AREX recommends conducting reagent titration tailored to each testing system for optimal detection results.

WB	1:500 - 1:2000
----	----------------

*Results are sample-specific. Please refer to your local assay conditions and test parameters for reference.

PRODUCT OVERVIEW

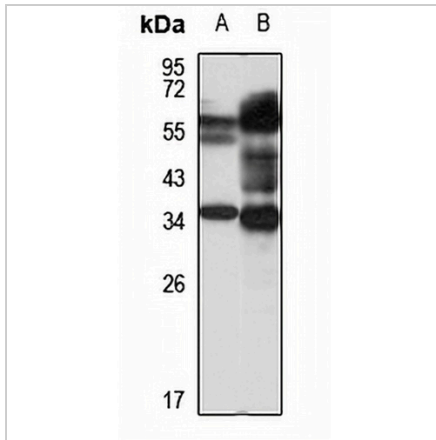
Description	Rabbit polyclonal antibody to LLT1
Specificity	Recognizes endogenous levels of LLT1 protein
Antibody Type	Primary antibody
Immunogen	Recombinant fusion protein of human LLT1. The exact sequence is proprietary.
Purification	The antibody was purified by immunogen affinity chromatography.
Molecular Weight	Predicted: 10; Observed: 38 kD
Form/Buffer	Liquid in 0.42% Potassium phosphate, 0.87% Sodium chloride, pH 7.3, 30% glycerol, and 0.01% sodium azide.
Alternative Names	CLAX; LLT1; OCIL; C-type lectin domain family 2 member D; Lectin-like NK cell receptor; Lectin-like transcript 1; LLT-1; Osteoclast inhibitory lectin
Gene Symbol	CLEC2D
Entrez Gene	29121(Human); 93694(Mouse)
SwissProt	Q9UHP7(Human); Q91V08(Mouse)

*AREX continuously optimizes our products. Webpage content may not reflect the latest updates. For inquiries, please contact info@arexbio.com or your local distributor.

*Clone Number, Reactivity, Source/Host and Clonality can be found in the product name and Key Features section above.

DATASHEET**LLT1 Rabbit Polyclonal Antibody**

CAT. NO. APA15323

DATA

Western blot analysis of LLT1 expression in U87MG (A), mouse heart (B) whole cell lysates. (Predicted band size: 10; 14; 17; 21; 22 kD; Observed band size: 38 kD)

STORAGE

Store at 4°C short term. For long term storage, store at -20°C, avoiding freeze/thaw cycles.

NOTE

For Research Use Only. Not for diagnostic, therapeutics, prophylactic or in vivo use.