

DATASHEET

CD303 Rabbit Polyclonal Antibody

CAT. NO. APA15324

KEY FEATURES

Target	CD303	Source / Host	Rabbit
Reactivity	Human, Mouse, Rat	Clonality	Polyclonal
Applications	WB, IF/ICC	Conjugation	Unconjugated
Form / Buffer	Liquid in 0.42% Potassium phosphate, 0.87% Sodium chloride, pH 7.3, 30% glycerol, and 0.01% sodium azide.		Storage at -20°C

BACKGROUND

Lectin-type cell surface receptor which may play a role in antigen capturing by dendritic cells . Specifically recognizes non-sialylated galactose-terminated biantennary glycans containing the trisaccharide epitope Gal(beta1-3/4)GlcNAc(beta1-2)Man . Binds to serum IgG . Efficiently targets ligand into antigen-processing and peptide-loading compartments for presentation to T-cells . May mediate potent inhibition of induction of IFN-alpha/beta expression in plasmacytoid dendritic cells . May act as a signaling receptor that activates protein-tyrosine kinases and mobilizes intracellular calcium .

APPLICATION

To ensure optimal assay performance, AREX recommends conducting reagent titration tailored to each testing system for optimal detection results.

WB	1:500 - 1:2000
IF/ICC	1:50 - 1:200

*Results are sample-specific. Please refer to your local assay conditions and test parameters for reference.

PRODUCT OVERVIEW

Description	Rabbit polyclonal antibody to CD303
Specificity	Recognizes endogenous levels of CD303 protein
Antibody Type	Primary antibody
Immunogen	Recombinant fusion protein of human CD303. The exact sequence is proprietary.
Purification	The antibody was purified by immunogen affinity chromatography.
Molecular Weight	Predicted: 21; Observed: 35 kD
Form/Buffer	Liquid in 0.42% Potassium phosphate, 0.87% Sodium chloride, pH 7.3, 30% glycerol, and 0.01% sodium azide.
Alternative Names	BDCA2; CLECSF11; CLECSF7; DLEC; HECL; C-type lectin domain family 4 member C; Blood dendritic cell antigen 2; BDCA-2; C-type lectin superfamily member 7; Dendritic lectin; CD303
Gene Symbol	CLEC4C
Entrez Gene	170482(Human)
SwissProt	Q8WTT0(Human)

*AREX continuously optimizes our products. Webpage content may not reflect the latest updates. For inquiries, please contact info@arexbio.com or your local distributor.

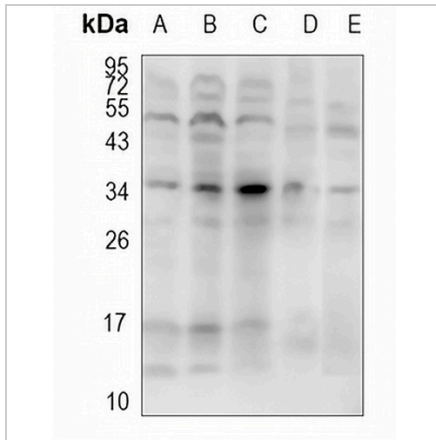
*Clone Number, Reactivity, Source/Host and Clonality can be found in the product name and Key Features section above.

DATASHEET

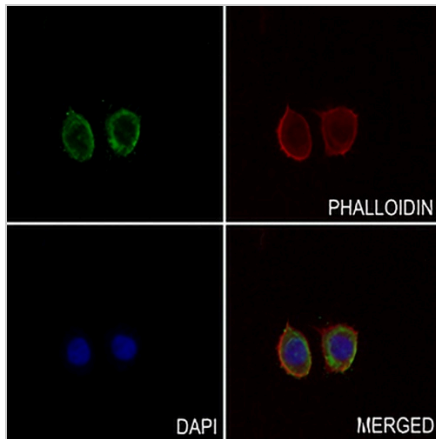
CD303 Rabbit Polyclonal Antibody

CAT. NO. APA15324

DATA



Western blot analysis of CD303 expression in HEK293T (A), EC9706 (B), SC7901 (C), mouse liver (D), rat liver (E) whole cell lysates. (Predicted band size: 21; 25 kD; Observed band size: 35 kD)



Immunofluorescent analysis of CD303 staining in KYSE40 cells. Formalin-fixed cells were permeabilized with 0.1% Triton X-100 in TBS for 5-10 minutes and blocked with 3% BSA-PBS for 30 minutes at room temperature. Cells were probed with the primary antibody in 3% BSA-PBS and incubated overnight at 4 °C in a humidified chamber. Cells were washed with PBST and incubated with a AREX® Fluor 488 -conjugated secondary antibody (green) in PBS at room temperature in the dark. Phalloidin - AREX® Fluor 594 was used to stain Actin filaments (red). DAPI was used to stain the cell nuclei (blue).

STORAGE

Store at 4°C short term. For long term storage, store at -20°C, avoiding freeze/thaw cycles.

NOTE

For Research Use Only. Not for diagnostic, therapeutics, prophylactic or in vivo use.