

**DATASHEET**

**CLEC-6 Rabbit Polyclonal Antibody**

CAT. NO. APA15325

**KEY FEATURES**

Target	CLEC-6	Source / Host	Rabbit
Reactivity	Human, Mouse, Rat	Clonality	Polyclonal
Applications	WB, IF/ICC	Conjugation	Unconjugated
Form / Buffer	Liquid in 0.42% Potassium phosphate, 0.87% Sodium chloride, pH 7.3, 30% glycerol, and 0.01% sodium azide.		Storage at -20°C

**BACKGROUND**

Calcium-dependent lectin that acts as a pattern recognition receptor (PRR) of the innate immune system: recognizes damage-associated molecular patterns (DAMPs) of pathogen-associated molecular patterns (PAMPs) of bacteria and fungi of the innate immune system: recognizes damage-associated molecular patterns (DAMPs) of pathogen-associated molecular patterns (PAMPs) of bacteria and fungi . The PAMPs include alpha-mannans on C.albicans hyphae and mycobacterial trehalose 6,6'-dimycolate (TDM) . Interacts with signaling adapter Fc receptor gamma chain/FCER1G, likely via CLEC4E, to form a functional complex in myeloid cells .

**APPLICATION**

To ensure optimal assay performance, AREX recommends conducting reagent titration tailored to each testing system for optimal detection results.

WB	1:500 - 1:2000
IF/ICC	1:50 - 1:200

\*Results are sample-specific. Please refer to your local assay conditions and test parameters for reference.

**PRODUCT OVERVIEW**

Description	Rabbit polyclonal antibody to CLEC-6
Specificity	Recognizes endogenous levels of CLEC-6 protein
Antibody Type	Primary antibody
Immunogen	Recombinant fusion protein of human CLEC-6. The exact sequence is proprietary.
Purification	The antibody was purified by immunogen affinity chromatography.
Molecular Weight	Predicted: 24 kD; Observed: 27 kD
Form/Buffer	Liquid in 0.42% Potassium phosphate, 0.87% Sodium chloride, pH 7.3, 30% glycerol, and 0.01% sodium azide.
Alternative Names	CLECSF8; MCL; C-type lectin domain family 4 member D; C-type lectin superfamily member 8; C-type lectin-like receptor 6; CLEC-6
Gene Symbol	CLEC4D
Entrez Gene	338339(Human); 17474(Mouse); 362432(Rat)
SwissProt	Q8WXI8(Human); Q9Z2H6(Mouse); Q69FH1(Rat)

\*AREX continuously optimizes our products. Webpage content may not reflect the latest updates. For inquiries, please contact [info@arexbio.com](mailto:info@arexbio.com) or your local distributor.

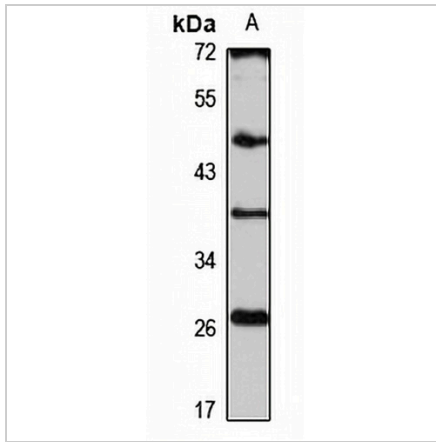
\*Clone Number, Reactivity, Source/Host and Clonality can be found in the product name and Key Features section above.

**DATASHEET**

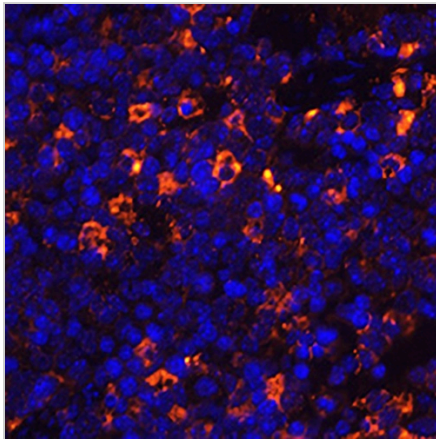
**CLEC-6 Rabbit Polyclonal Antibody**

CAT. NO. APA15325

**DATA**



Western blot analysis of CLEC-6 expression in HEK293T (A) whole cell lysates. (Predicted band size: 24 kD; Observed band size: 27 kD)



Immunofluorescent analysis of CLEC-6 staining in mouse spleen. Formalin-fixed cells were permeabilized with 0.1% Triton X-100 in TBS for 5-10 minutes and blocked with 3% BSA-PBS for 30 minutes at room temperature. Cells were probed with the primary antibody in 3% BSA-PBS and incubated overnight at 4 °C in a humidified chamber. Cells were washed with PBST and incubated with a AREX® Fluor 594-conjugated secondary antibody (red) in PBS at room temperature in the dark. DAPI was used to stain the cell nuclei (blue).

**STORAGE**

Store at 4°C short term. For long term storage, store at -20°C, avoiding freeze/thaw cycles.

**NOTE**

For Research Use Only. Not for diagnostic, therapeutics, prophylactic or in vivo use.