

DATASHEET

MDL-1 Rabbit Polyclonal Antibody

CAT. NO. APA15327

KEY FEATURES

Target	MDL-1	Source / Host	Rabbit
Reactivity	Human, Mouse, Rat	Clonality	Polyclonal
Applications	WB	Conjugation	Unconjugated
Form / Buffer	Liquid in 0.42% Potassium phosphate, 0.87% Sodium chloride, pH 7.3, 30% glycerol, and 0.01% sodium azide.		Storage at -20°C

BACKGROUND

Functions as a positive regulator of osteoclastogenesis . Cell surface receptor that signals via TYROBP . Regulates inflammatory responses .

APPLICATION

To ensure optimal assay performance, AREX recommends conducting reagent titration tailored to each testing system for optimal detection results.

WB	1:500 - 1:2000
----	----------------

*Results are sample-specific. Please refer to your local assay conditions and test parameters for reference.

PRODUCT OVERVIEW

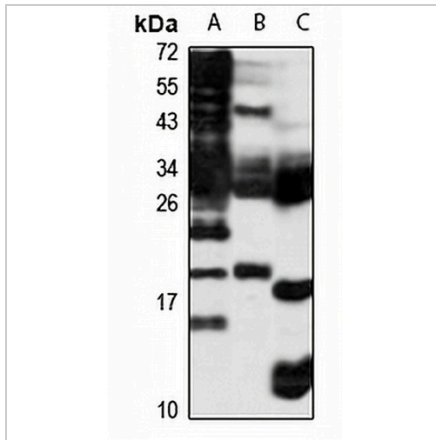
Description	Rabbit polyclonal antibody to MDL-1
Specificity	Recognizes endogenous levels of MDL-1 protein
Antibody Type	Primary antibody
Immunogen	Recombinant fusion protein of human MDL-1. The exact sequence is proprietary.
Purification	The antibody was purified by immunogen affinity chromatography.
Molecular Weight	Predicted: 21 kD; Observed: 20 kD
Form/Buffer	Liquid in 0.42% Potassium phosphate, 0.87% Sodium chloride, pH 7.3, 30% glycerol, and 0.01% sodium azide.
Alternative Names	CLECSF5; MDL1; C-type lectin domain family 5 member A; C-type lectin superfamily member 5; Myeloid DAP12-associating lectin 1; MDL-1
Gene Symbol	CLEC5A
Entrez Gene	23601(Human); 23845(Mouse)
SwissProt	Q9NY25(Human); Q9R007(Mouse)

*AREX continuously optimizes our products. Webpage content may not reflect the latest updates. For inquiries, please contact info@arexbio.com or your local distributor.

*Clone Number, Reactivity, Source/Host and Clonality can be found in the product name and Key Features section above.

DATASHEET**MDL-1 Rabbit Polyclonal Antibody**

CAT. NO. APA15327

DATA

Western blot analysis of MDL-1 expression in LO2 (A), mouse spleen (B), rat spleen (C) whole cell lysates. (Predicted band size: 21 kD; Observed band size: 20 kD)

STORAGE

Store at 4°C short term. For long term storage, store at -20°C, avoiding freeze/thaw cycles.

NOTE

For Research Use Only. Not for diagnostic, therapeutics, prophylactic or in vivo use.