

DATASHEET

Epsin 4 Rabbit Polyclonal Antibody

CAT. NO. APA15328

KEY FEATURES

Target	Epsin 4	Source / Host	Rabbit
Reactivity	Human	Clonality	Polyclonal
Applications	WB, IHC	Conjugation	Unconjugated
Form / Buffer	Liquid in 0.42% Potassium phosphate, 0.87% Sodium chloride, pH 7.3, 30% glycerol, and 0.01% sodium azide.		Storage at -20°C

BACKGROUND

Binds to membranes enriched in phosphatidylinositol 4,5-bisphosphate (PtdIns(4,5)P₂). May have a role in transport via clathrin-coated vesicles from the trans-Golgi network to endosomes. Stimulates clathrin assembly.

APPLICATION

To ensure optimal assay performance, AREX recommends conducting reagent titration tailored to each testing system for optimal detection results.

WB	1:500 - 1:2000
IHC	1:50 - 1:200

*Results are sample-specific. Please refer to your local assay conditions and test parameters for reference.

PRODUCT OVERVIEW

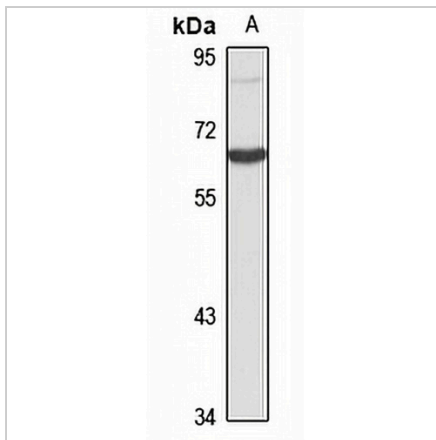
Description	Rabbit polyclonal antibody to Epsin 4
Specificity	Recognizes endogenous levels of Epsin 4 protein
Antibody Type	Primary antibody
Immunogen	KLH-conjugated synthetic peptide of human Epsin 4. The exact sequence is proprietary.
Purification	The antibody was purified by immunogen affinity chromatography.
Molecular Weight	Predicted: 68; Observed: 64 kD
Form/Buffer	Liquid in 0.42% Potassium phosphate, 0.87% Sodium chloride, pH 7.3, 30% glycerol, and 0.01% sodium azide.
Alternative Names	ENTH; EPN4; EPNR; KIAA0171; Clathrin interactor 1; Clathrin-interacting protein localized in the trans-Golgi region; Clint; Enthoprotin; Epsin-4; Epsin-related protein; EpsinR
Gene Symbol	CLINT1
Entrez Gene	9685(Human)
SwissProt	Q14677(Human)

*AREX continuously optimizes our products. Webpage content may not reflect the latest updates. For inquiries, please contact info@arexbio.com or your local distributor.

*Clone Number, Reactivity, Source/Host and Clonality can be found in the product name and Key Features section above.

DATASHEET**Epsin 4 Rabbit Polyclonal Antibody**

CAT. NO. APA15328

DATA

Western blot analysis of Epsin 4 expression in HL60 (A) whole cell lysates. (Predicted band size: 68; 70 kD; Observed band size: 64 kD)

STORAGE

Store at 4°C short term. For long term storage, store at -20°C, avoiding freeze/thaw cycles.

NOTE

For Research Use Only. Not for diagnostic, therapeutics, prophylactic or in vivo use.