

**DATASHEET**

**RLBP1L2 Rabbit Polyclonal Antibody**

CAT. NO. APA15332

**KEY FEATURES**

Target	RLBP1L2	Source / Host	Rabbit
Reactivity	Human, Mouse, Rat	Clonality	Polyclonal
Applications	WB	Conjugation	Unconjugated
Form / Buffer	Liquid in 0.42% Potassium phosphate, 0.87% Sodium chloride, pH 7.3, 30% glycerol, and 0.01% sodium azide.		Storage at -20°C

**BACKGROUND**

Required for normal morphology of late endosomes and/or lysosomes in neurons . Binds phosphatidylinositol 3,5-bisphosphate (PtdIns(3,5)P2).

**APPLICATION**

To ensure optimal assay performance, AREX recommends conducting reagent titration tailored to each testing system for optimal detection results.

WB	1:500 - 1:2000
----	----------------

\*Results are sample-specific. Please refer to your local assay conditions and test parameters for reference.

**PRODUCT OVERVIEW**

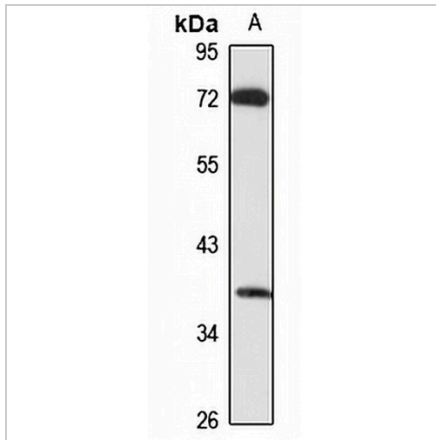
Description	Rabbit polyclonal antibody to RLBP1L2
Specificity	Recognizes endogenous levels of RLBP1L2 protein
Antibody Type	Primary antibody
Immunogen	Recombinant fusion protein of human RLBP1L2. The exact sequence is proprietary.
Purification	The antibody was purified by immunogen affinity chromatography.
Molecular Weight	Predicted: 38 kD; Observed: 38 kD
Form/Buffer	Liquid in 0.42% Potassium phosphate, 0.87% Sodium chloride, pH 7.3, 30% glycerol, and 0.01% sodium azide.
Alternative Names	C6orf212; C6orf213; RLBP1L2; Clavesin-2; Retinaldehyde-binding protein 1-like 2
Gene Symbol	CLVS2
Entrez Gene	134829(Human); 215890(Mouse)
SwissProt	Q5SYC1(Human); Q8BG92(Mouse); A6JUQ6(Rat)

\*AREX continuously optimizes our products. Webpage content may not reflect the latest updates. For inquiries, please contact [info@arexbio.com](mailto:info@arexbio.com) or your local distributor.

\*Clone Number, Reactivity, Source/Host and Clonality can be found in the product name and Key Features section above.

**DATASHEET****RLBP1L2 Rabbit Polyclonal Antibody**

CAT. NO. APA15332

**DATA**

Western blot analysis of RLBP1L2 expression in U87MG (A) whole cell lysates. (Predicted band size: 38 kD; Observed band size: 38 kD)

**STORAGE**

Store at 4°C short term. For long term storage, store at -20°C, avoiding freeze/thaw cycles.

**NOTE**

For Research Use Only. Not for diagnostic, therapeutics, prophylactic or in vivo use.