

DATASHEET

CNTD1 Rabbit Polyclonal Antibody

CAT. NO. APA15339

KEY FEATURES

Target	CNTD1	Source / Host	Rabbit
Reactivity	Human, Mouse	Clonality	Polyclonal
Applications	WB	Conjugation	Unconjugated
Form / Buffer	Liquid in 0.42% Potassium phosphate, 0.87% Sodium chloride, pH 7.3, 30% glycerol, and 0.01% sodium azide.		Storage at -20°C

BACKGROUND

Plays a role in the different steps of crossover formation during meiotic recombination. Participates in the crossover differentiation step of crossover-specific recombination intermediates through its interaction with PRR19. In addition, stimulates crossover formation through the interactions with RFC3 and RFC4 and simultaneously regulates cell-cycle progression through interactions with CDC34 and subsequent ubiquitination of WEE1. May also participates in an active deselection process that destabilizes or removes excess pre-CO intermediates.

APPLICATION

To ensure optimal assay performance, AREX recommends conducting reagent titration tailored to each testing system for optimal detection results.

WB	1:500 - 1:2000
----	----------------

*Results are sample-specific. Please refer to your local assay conditions and test parameters for reference.

PRODUCT OVERVIEW

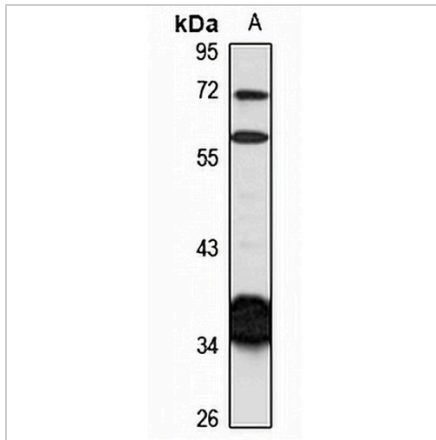
Description	Rabbit polyclonal antibody to CNTD1
Specificity	Recognizes endogenous levels of CNTD1 protein
Antibody Type	Primary antibody
Immunogen	Recombinant fusion protein of human CNTD1. The exact sequence is proprietary.
Purification	The antibody was purified by immunogen affinity chromatography.
Molecular Weight	Predicted: 36 kD; Observed: 37 kD
Form/Buffer	Liquid in 0.42% Potassium phosphate, 0.87% Sodium chloride, pH 7.3, 30% glycerol, and 0.01% sodium azide.
Alternative Names	CNTD; Cyclin N-terminal domain-containing protein 1
Gene Symbol	CNTD1
Entrez Gene	124817(Human); 68107(Mouse)
SwissProt	Q8N815(Human); Q9D995(Mouse)

*AREX continuously optimizes our products. Webpage content may not reflect the latest updates. For inquiries, please contact info@arexbio.com or your local distributor.

*Clone Number, Reactivity, Source/Host and Clonality can be found in the product name and Key Features section above.

DATASHEET**CNTD1 Rabbit Polyclonal Antibody**

CAT. NO. APA15339

DATA

Western blot analysis of CNTD1 expression in PC3 (A) whole cell lysates. (Predicted band size: 36 kD; Observed band size: 37 kD)

STORAGE

Store at 4°C short term. For long term storage, store at -20°C, avoiding freeze/thaw cycles.

NOTE

For Research Use Only. Not for diagnostic, therapeutics, prophylactic or in vivo use.