

DATASHEET

CASPR1 Rabbit Polyclonal Antibody

CAT. NO. APA15341

KEY FEATURES

Target	CASPR1	Source / Host	Rabbit
Reactivity	Human, Mouse, Rat	Clonality	Polyclonal
Applications	WB	Conjugation	Unconjugated
Form / Buffer	Liquid in 0.42% Potassium phosphate, 0.87% Sodium chloride, pH 7.3, 30% glycerol, and 0.01% sodium azide.		Storage at -20°C

BACKGROUND

Required, with CNTNAP2, for radial and longitudinal organization of myelinated axons. Plays a role in the formation of functional distinct domains critical for saltatory conduction of nerve impulses in myelinated nerve fibers. Demarcates the paranodal region of the axo-glial junction. In association with contactin involved in the signaling between axons and myelinating glial cells.

APPLICATION

To ensure optimal assay performance, AREX recommends conducting reagent titration tailored to each testing system for optimal detection results.

WB	1:500 - 1:2000
----	----------------

*Results are sample-specific. Please refer to your local assay conditions and test parameters for reference.

PRODUCT OVERVIEW

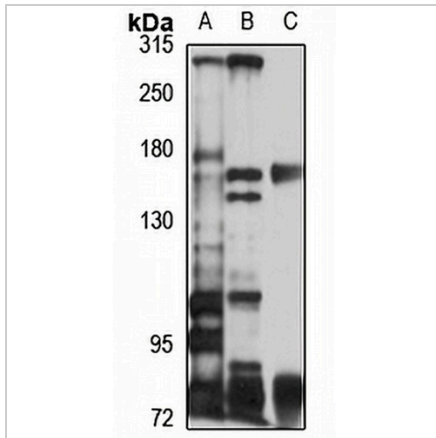
Description	Rabbit polyclonal antibody to CASPR1
Specificity	Recognizes endogenous levels of CASPR1 protein
Antibody Type	Primary antibody
Immunogen	Recombinant fusion protein of human CASPR1. The exact sequence is proprietary.
Purification	The antibody was purified by immunogen affinity chromatography.
Molecular Weight	Predicted: 156 kD; Observed: 170 kD
Form/Buffer	Liquid in 0.42% Potassium phosphate, 0.87% Sodium chloride, pH 7.3, 30% glycerol, and 0.01% sodium azide.
Alternative Names	CASPR; NRXN4; Contactin-associated protein 1; Caspr; Caspr1; Neurexin IV; Neurexin-4; p190
Gene Symbol	CNTNAP1
Entrez Gene	8506(Human); 53321(Mouse); 84008(Rat)
SwissProt	P78357(Human); O54991(Mouse); P97846(Rat)

*AREX continuously optimizes our products. Webpage content may not reflect the latest updates. For inquiries, please contact info@arexbio.com or your local distributor.

*Clone Number, Reactivity, Source/Host and Clonality can be found in the product name and Key Features section above.

DATASHEET**CASPR1 Rabbit Polyclonal Antibody**

CAT. NO. APA15341

DATA

Western blot analysis of CASPR1 expression in U937 (A), mouse brain (B), rat kidney (C) whole cell lysates. (Predicted band size: 156 kD; Observed band size: 170 kD)

STORAGE

Store at 4°C short term. For long term storage, store at -20°C, avoiding freeze/thaw cycles.

NOTE

For Research Use Only. Not for diagnostic, therapeutics, prophylactic or in vivo use.