

## DATASHEET

# Centriolin Rabbit Polyclonal Antibody

CAT. NO. APA15343

### KEY FEATURES

Target	Centriolin	Source / Host	Rabbit
Reactivity	Human, Mouse, Rat	Clonality	Polyclonal
Applications	WB	Conjugation	Unconjugated
Form / Buffer	Liquid in 0.42% Potassium phosphate, 0.87% Sodium chloride, pH 7.3, 30% glycerol, and 0.01% sodium azide.		Storage at -20°C

### BACKGROUND

Involved in cell cycle progression and cytokinesis. During the late steps of cytokinesis, anchors exocyst and SNARE complexes at the midbody, thereby allowing secretory vesicle-mediated abscission.

### APPLICATION

To ensure optimal assay performance, AREX recommends conducting reagent titration tailored to each testing system for optimal detection results.

WB	1:500 - 1:2000
----	----------------

\*Results are sample-specific. Please refer to your local assay conditions and test parameters for reference.

### PRODUCT OVERVIEW

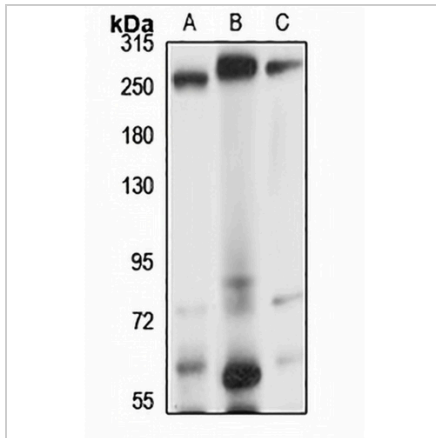
Description	Rabbit polyclonal antibody to Centriolin
Specificity	Recognizes endogenous levels of Centriolin protein
Antibody Type	Primary antibody
Immunogen	Recombinant fusion protein of human Centriolin. The exact sequence is proprietary.
Purification	The antibody was purified by immunogen affinity chromatography.
Molecular Weight	Predicted: 56; Observed: 280 kD
Form/Buffer	Liquid in 0.42% Potassium phosphate, 0.87% Sodium chloride, pH 7.3, 30% glycerol, and 0.01% sodium azide.
Alternative Names	CEP1; CEP110; Centriolin; Centrosomal protein 1; Centrosomal protein of 110 kDa; Cep110
Gene Symbol	CNTRL
Entrez Gene	11064(Human); 26920(Mouse)
SwissProt	Q7Z7A1(Human); A2AL36(Mouse)

\*AREX continuously optimizes our products. Webpage content may not reflect the latest updates. For inquiries, please contact [info@arexbio.com](mailto:info@arexbio.com) or your local distributor.

\*Clone Number, Reactivity, Source/Host and Clonality can be found in the product name and Key Features section above.

**DATASHEET****Centriolin Rabbit Polyclonal Antibody**

CAT. NO. APA15343

**DATA**

Western blot analysis of Centriolin expression in Raji (A), mouse spleen (B), rat brain (C) whole cell lysates. (Predicted band size: 56; 116; 205; 268 kD; Observed band size: 280 kD)

**STORAGE**

Store at 4°C short term. For long term storage, store at -20°C, avoiding freeze/thaw cycles.

**NOTE**

For Research Use Only. Not for diagnostic, therapeutics, prophylactic or in vivo use.