

**DATASHEET**

**CCDC56 Rabbit Polyclonal Antibody**

CAT. NO. APA15344

**KEY FEATURES**

Target	CCDC56	Source / Host	Rabbit
Reactivity	Human, Mouse	Clonality	Polyclonal
Applications	WB	Conjugation	Unconjugated
Form / Buffer	Liquid in 0.42% Potassium phosphate, 0.87% Sodium chloride, pH 7.3, 30% glycerol, and 0.01% sodium azide.		Storage at -20°C

**BACKGROUND**

Core component of the MITRAC (mitochondrial translation regulation assembly intermediate of cytochrome c oxidase complex) complex, that regulates cytochrome c oxidase assembly. MITRAC complexes regulate both translation of mitochondrial encoded components and assembly of nuclear-encoded components imported in mitochondrion. Required for efficient translation of MT-CO1 and mitochondrial respiratory chain complex IV assembly.

**APPLICATION**

To ensure optimal assay performance, AREX recommends conducting reagent titration tailored to each testing system for optimal detection results.

WB	1:500 - 1:2000
----	----------------

\*Results are sample-specific. Please refer to your local assay conditions and test parameters for reference.

**PRODUCT OVERVIEW**

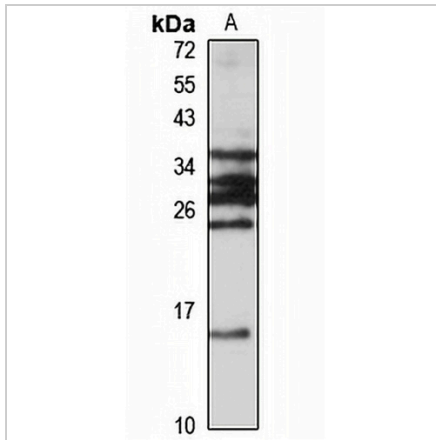
Description	Rabbit polyclonal antibody to CCDC56
Specificity	Recognizes endogenous levels of CCDC56 protein
Antibody Type	Primary antibody
Immunogen	Recombinant fusion protein of human CCDC56. The exact sequence is proprietary.
Purification	The antibody was purified by immunogen affinity chromatography.
Molecular Weight	Predicted: 11 kD; Observed: 12 kD
Form/Buffer	Liquid in 0.42% Potassium phosphate, 0.87% Sodium chloride, pH 7.3, 30% glycerol, and 0.01% sodium azide.
Alternative Names	CCDC56; MITRAC12; Cytochrome c oxidase assembly factor 3 homolog mitochondrial; Coiled-coil domain-containing protein 56; Mitochondrial translation regulation assembly intermediate of cytochrome c oxidase protein of 12 kDa
Gene Symbol	COA3
Entrez Gene	28958(Human); 52469(Mouse)
SwissProt	Q9Y2R0(Human); Q9D2R6(Mouse)

\*AREX continuously optimizes our products. Webpage content may not reflect the latest updates. For inquiries, please contact [info@arexbio.com](mailto:info@arexbio.com) or your local distributor.

\*Clone Number, Reactivity, Source/Host and Clonality can be found in the product name and Key Features section above.

**DATASHEET****CCDC56 Rabbit Polyclonal Antibody**

CAT. NO. APA15344

**DATA**

Western blot analysis of CCDC56 expression in MCF7 (A) whole cell lysates. (Predicted band size: 11 kD; Observed band size: 12 kD)

**STORAGE**

Store at 4°C short term. For long term storage, store at -20°C, avoiding freeze/thaw cycles.

**NOTE**

For Research Use Only. Not for diagnostic, therapeutics, prophylactic or in vivo use.