

## DATASHEET

# Coronin-2A Rabbit Polyclonal Antibody

CAT. NO. APA15358

### KEY FEATURES

|               |   |               |                     |
|---------------|---|---------------|---------------------|
| Target        | Coronin-2A  | Source / Host | Rabbit              |
| Reactivity    | Human, Mouse, Rat   | Clonality     | Polyclonal          |
| Applications  | WB  | Conjugation   | Unconjugated        |
| Form / Buffer | Liquid in 0.42% Potassium phosphate, 0.87% Sodium chloride, pH 7.3, 30% glycerol, and 0.01% sodium azide. |               | Storage<br>at -20°C |

### BACKGROUND

This gene encodes a member of the WD repeat protein family. WD repeats are minimally conserved regions of approximately 40 amino acids typically bracketed by gly-his and trp-asp (GH-WD), which may facilitate formation of heterotrimeric or multiprotein complexes. Members of this family are involved in a variety of cellular processes, including cell cycle progression, signal transduction, apoptosis, and gene regulation. This protein contains 5 WD repeats, and has a structural similarity with actin-binding proteins: the D. discoideum coronin and the human p57 protein, suggesting that this protein may also be an actin-binding protein that regulates cell motility. Alternative splicing of this gene generates 2 transcript variants.

### APPLICATION

To ensure optimal assay performance, AREX recommends conducting reagent titration tailored to each testing system for optimal detection results.

|    |                |
|----|----------------|
| WB | 1:500 - 1:2000 |
|----|----------------|

\*Results are sample-specific. Please refer to your local assay conditions and test parameters for reference.

### PRODUCT OVERVIEW

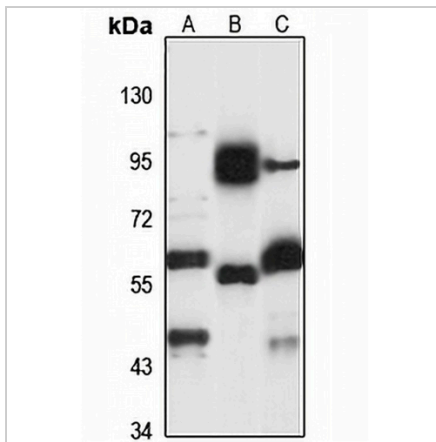
|                   |   |
|-------------------|---|
| Description       | Rabbit polyclonal antibody to Coronin-2A  |
| Specificity       | Recognizes endogenous levels of Coronin-2A protein  |
| Antibody Type     | Primary antibody  |
| Immunogen         | Recombinant fusion protein of human Coronin-2A. The exact sequence is proprietary.                        |
| Purification      | The antibody was purified by immunogen affinity chromatography.   |
| Molecular Weight  | Predicted: 59 kD; Observed: 60 kD   |
| Form/Buffer       | Liquid in 0.42% Potassium phosphate, 0.87% Sodium chloride, pH 7.3, 30% glycerol, and 0.01% sodium azide. |
| Alternative Names | IR10; WDR2; Coronin-2A; IR10; WD repeat-containing protein 2  |
| Gene Symbol       | CORO2A  |
| Entrez Gene       | 7464(Human); 107684(Mouse)  |
| SwissProt         | Q92828(Human); Q8C0P5(Mouse)  |

\*AREX continuously optimizes our products. Webpage content may not reflect the latest updates. For inquiries, please contact [info@arexbio.com](mailto:info@arexbio.com) or your local distributor.

\*Clone Number, Reactivity, Source/Host and Clonality can be found in the product name and Key Features section above.

**DATASHEET****Coronin-2A Rabbit Polyclonal Antibody**

CAT. NO. APA15358

**DATA**

Western blot analysis of Coronin-2A expression in HT29 (A), mouse eye (B), rat eye (C) whole cell lysates. (Predicted band size: 59 kD; Observed band size: 60 kD)

**STORAGE**

Store at 4°C short term. For long term storage, store at -20°C, avoiding freeze/thaw cycles.

**NOTE**

For Research Use Only. Not for diagnostic, therapeutics, prophylactic or in vivo use.