

DATASHEET

Coronin-2B Rabbit Polyclonal Antibody

CAT. NO. APA15359

KEY FEATURES

Target	Coronin-2B	Source / Host	Rabbit
Reactivity	Human, Mouse	Clonality	Polyclonal
Applications	WB	Conjugation	Unconjugated
Form / Buffer	Liquid in 0.42% Potassium phosphate, 0.87% Sodium chloride, pH 7.3, 30% glycerol, and 0.01% sodium azide.		Storage at -20°C

BACKGROUND

May play a role in the reorganization of neuronal actin structure.

APPLICATION

To ensure optimal assay performance, AREX recommends conducting reagent titration tailored to each testing system for optimal detection results.

WB	1:500 - 1:2000
----	----------------

*Results are sample-specific. Please refer to your local assay conditions and test parameters for reference.

PRODUCT OVERVIEW

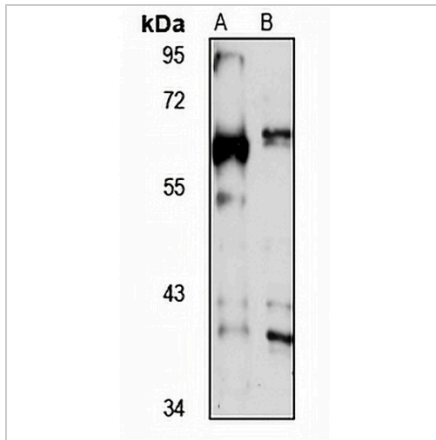
Description	Rabbit polyclonal antibody to Coronin-2B
Specificity	Recognizes endogenous levels of Coronin-2B protein
Antibody Type	Primary antibody
Immunogen	Recombinant fusion protein of human Coronin-2B. The exact sequence is proprietary.
Purification	The antibody was purified by immunogen affinity chromatography.
Molecular Weight	Predicted: 54 kD; Observed: 60 kD
Form/Buffer	Liquid in 0.42% Potassium phosphate, 0.87% Sodium chloride, pH 7.3, 30% glycerol, and 0.01% sodium azide.
Alternative Names	KIAA0925; Coronin-2B; Coronin-like protein C; Clipin-C; Protein FC96
Gene Symbol	CORO2B
Entrez Gene	10391(Human); 235431(Mouse)
SwissProt	Q9UQ03(Human); Q8BH44(Mouse)

*AREX continuously optimizes our products. Webpage content may not reflect the latest updates. For inquiries, please contact info@arexbio.com or your local distributor.

*Clone Number, Reactivity, Source/Host and Clonality can be found in the product name and Key Features section above.

DATASHEET**Coronin-2B Rabbit Polyclonal Antibody**

CAT. NO. APA15359

DATA

Western blot analysis of Coronin-2B expression in NIH3T3 (A), Jurkat (B) whole cell lysates. (Predicted band size: 54 kD; Observed band size: 60 kD)

STORAGE

Store at 4°C short term. For long term storage, store at -20°C, avoiding freeze/thaw cycles.

NOTE

For Research Use Only. Not for diagnostic, therapeutics, prophylactic or in vivo use.