

DATASHEET

Ceruloplasmin Rabbit Polyclonal Antibody

CAT. NO. APA15360

KEY FEATURES

Target	Ceruloplasmin	Source / Host	Rabbit
Reactivity	Human, Mouse, Rat	Clonality	Polyclonal
Applications	WB, IF/ICC	Conjugation	Unconjugated
Form / Buffer	Liquid in 0.42% Potassium phosphate, 0.87% Sodium chloride, pH 7.3, 30% glycerol, and 0.01% sodium azide.		Storage at -20°C

BACKGROUND

Multifunctional blue, copper-binding (6-7 atoms per molecule) glycoprotein. It has ferroxidase activity oxidizing Fe(2+) to Fe(3+) without releasing radical oxygen species. It is involved in iron transport across the cell membrane glycoprotein. It has ferroxidase activity oxidizing Fe(2+) to Fe(3+) without releasing radical oxygen species. It is involved in iron transport across the cell membrane . Copper ions provide a large number of enzymatic activities. Oxidizes highly toxic ferrous ions to the ferric state for further incorporation onto apo-transferrins, catalyzes Cu(+) oxidation and promotes the oxidation of biogenic amines such as norepinephrin and serotonin . Provides Cu(2+) ions for the ascorbate-mediated deaminase degradation of the heparan sulfate chains of GPC1 .

APPLICATION

To ensure optimal assay performance, AREX recommends conducting reagent titration tailored to each testing system for optimal detection results.

WB	1:500 - 1:2000
IF/ICC	1:50 - 1:200

*Results are sample-specific. Please refer to your local assay conditions and test parameters for reference.

PRODUCT OVERVIEW

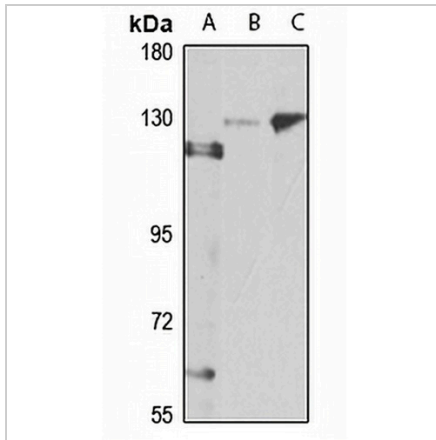
Description	Rabbit polyclonal antibody to Ceruloplasmin
Specificity	Recognizes endogenous levels of Ceruloplasmin protein
Antibody Type	Primary antibody
Immunogen	Recombinant fusion protein of human Ceruloplasmin. The exact sequence is proprietary.
Purification	The antibody was purified by immunogen affinity chromatography.
Molecular Weight	Predicted: 122 kD; Observed: 119-130 kD
Form/Buffer	Liquid in 0.42% Potassium phosphate, 0.87% Sodium chloride, pH 7.3, 30% glycerol, and 0.01% sodium azide.
Alternative Names	Ceruloplasmin; Ferroxidase
Gene Symbol	CP
Entrez Gene	1356(Human); 12870(Mouse)
SwissProt	P00450(Human); Q61147(Mouse); P13635(Rat)

*AREX continuously optimizes our products. Webpage content may not reflect the latest updates. For inquiries, please contact info@arexbio.com or your local distributor.

*Clone Number, Reactivity, Source/Host and Clonality can be found in the product name and Key Features section above.

DATASHEET**Ceruloplasmin Rabbit Polyclonal Antibody**

CAT. NO. APA15360

DATA

Western blot analysis of Ceruloplasmin expression in HepG2 (A), mouse lung (B), rat liver (C) whole cell lysates. (Predicted band size: 122 kD; Observed band size: 119-130 kD)

STORAGE

Store at 4°C short term. For long term storage, store at -20°C, avoiding freeze/thaw cycles.

NOTE

For Research Use Only. Not for diagnostic, therapeutics, prophylactic or in vivo use.