

DATASHEET

CPA2 Rabbit Polyclonal Antibody

CAT. NO. APA15361

KEY FEATURES

Target	CPA2	Source / Host	Rabbit
Reactivity	Human	Clonality	Polyclonal
Applications	WB	Conjugation	Unconjugated
Form / Buffer	Liquid in 0.42% Potassium phosphate, 0.87% Sodium chloride, pH 7.3, 30% glycerol, and 0.01% sodium azide.		Storage at -20°C

BACKGROUND

Carboxypeptidase that catalyzes the release of a C-terminal amino acid, with a preference for large aromatic C-terminal residues.

APPLICATION

To ensure optimal assay performance, AREX recommends conducting reagent titration tailored to each testing system for optimal detection results.

WB	1:500 - 1:1000
----	----------------

*Results are sample-specific. Please refer to your local assay conditions and test parameters for reference.

PRODUCT OVERVIEW

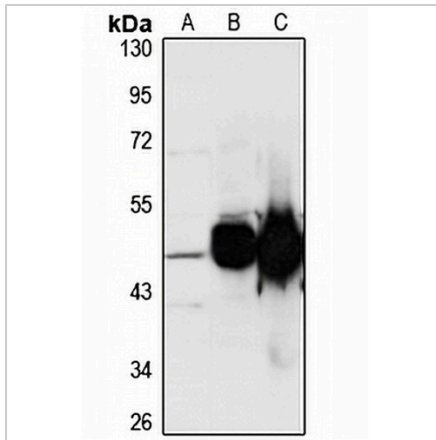
Description	Rabbit polyclonal antibody to CPA2
Specificity	Recognizes endogenous levels of CPA2 protein
Antibody Type	Primary antibody
Immunogen	Recombinant fusion protein of human CPA2. The exact sequence is proprietary.
Purification	The antibody was purified by immunogen affinity chromatography.
Molecular Weight	Predicted: 47 kD; Observed: 47 kD
Form/Buffer	Liquid in 0.42% Potassium phosphate, 0.87% Sodium chloride, pH 7.3, 30% glycerol, and 0.01% sodium azide.
Alternative Names	Carboxypeptidase A2
Gene Symbol	CPA2
Entrez Gene	1358(Human); 232680(Mouse)
SwissProt	P48052(Human); Q504N0(Mouse); P19222(Rat)

*AREX continuously optimizes our products. Webpage content may not reflect the latest updates. For inquiries, please contact info@arexbio.com or your local distributor.

*Clone Number, Reactivity, Source/Host and Clonality can be found in the product name and Key Features section above.

DATASHEET**CPA2 Rabbit Polyclonal Antibody**

CAT. NO. APA15361

DATA

Western blot analysis of CPA2 expression in SHSY5Y (A), mouse pancreas (B), rat pancreas (C) whole cell lysates. (Predicted band size: 47 kD; Observed band size: 47 kD)

STORAGE

Store at 4°C short term. For long term storage, store at -20°C, avoiding freeze/thaw cycles.

NOTE

For Research Use Only. Not for diagnostic, therapeutics, prophylactic or in vivo use.