

DATASHEET

Carboxypeptidase A4 Rabbit Polyclonal Antibody

CAT. NO. APA15362

KEY FEATURES

Target	Carboxypeptidase A4	Source / Host	Rabbit
Reactivity	Human, Mouse, Rat	Clonality	Polyclonal
Applications	WB	Conjugation	Unconjugated
Form / Buffer	Liquid in 0.42% Potassium phosphate, 0.87% Sodium chloride, pH 7.3, 30% glycerol, and 0.01% sodium azide.	Storage	at-20°C

BACKGROUND

Metalloprotease that cleaves hydrophobic C-terminal residues with a preference for -Phe, -Leu, -Ile, -Met, -Tyr and -Val . May function in peptide hormone and/or neuropeptide catabolism .

APPLICATION

To ensure optimal assay performance, AREX recommends conducting reagent titration tailored to each testing system for optimal detection results.

WB	1:500 - 1:2000
----	----------------

*Results are sample-specific. Please refer to your local assay conditions and test parameters for reference.

PRODUCT OVERVIEW

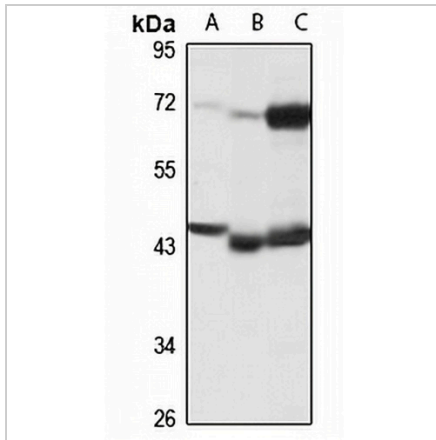
Description	Rabbit polyclonal antibody to Carboxypeptidase A4
Specificity	Recognizes endogenous levels of Carboxypeptidase A4 protein
Antibody Type	Primary antibody
Immunogen	Recombinant fusion protein of human Carboxypeptidase A4. The exact sequence is proprietary.
Purification	The antibody was purified by immunogen affinity chromatography.
Molecular Weight	Predicted: 47 kD; Observed: 47 kD
Form/Buffer	Liquid in 0.42% Potassium phosphate, 0.87% Sodium chloride, pH 7.3, 30% glycerol, and 0.01% sodium azide.
Alternative Names	CPA3; Carboxypeptidase A4; Carboxypeptidase A3
Gene Symbol	CPA4
Entrez Gene	51200(Human); 71791(Mouse)
SwissProt	Q9UI42(Human); Q6P8K8(Mouse)

*AREX continuously optimizes our products. Webpage content may not reflect the latest updates. For inquiries, please contact info@arexbio.com or your local distributor.

*Clone Number, Reactivity, Source/Host and Clonality can be found in the product name and Key Features section above.

DATASHEET**Carboxypeptidase A4 Rabbit Polyclonal Antibody**

CAT. NO. APA15362

DATA

Western blot analysis of Carboxypeptidase A4 expression in A549 (A), mouse brain (B), rat lung (C) whole cell lysates. (Predicted band size: 47 kD; Observed band size: 47 kD)

STORAGE

Store at 4°C short term. For long term storage, store at -20°C, avoiding freeze/thaw cycles.

NOTE

For Research Use Only. Not for diagnostic, therapeutics, prophylactic or in vivo use.