

**DATASHEET**

**Complexin-1 Rabbit Polyclonal Antibody**

CAT. NO. APA15365

**KEY FEATURES**

Target	Complexin-1	Source / Host	Rabbit
Reactivity	Human, Mouse, Rat	Clonality	Polyclonal
Applications	WB	Conjugation	Unconjugated
Form / Buffer	Liquid in 0.42% Potassium phosphate, 0.87% Sodium chloride, pH 7.3, 30% glycerol, and 0.01% sodium azide.		Storage at -20°C

**BACKGROUND**

Positively regulates a late step in exocytosis of various cytoplasmic vesicles, such as synaptic vesicles and other secretory vesicles. Organizes the SNAREs into a cross-linked zigzag topology that, when interposed between the vesicle and plasma membranes, is incompatible with fusion, thereby preventing SNAREs from releasing neurotransmitters until an action potential arrives at the synapse. Also involved in glucose-induced secretion of insulin by pancreatic beta-cells. Essential for motor behavior.

**APPLICATION**

To ensure optimal assay performance, AREX recommends conducting reagent titration tailored to each testing system for optimal detection results.

WB	1:500 - 1:2000
----	----------------

\*Results are sample-specific. Please refer to your local assay conditions and test parameters for reference.

**PRODUCT OVERVIEW**

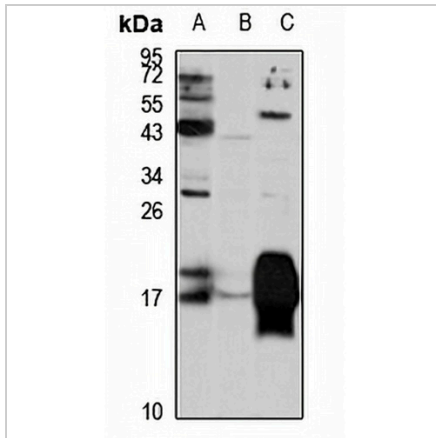
Description	Rabbit polyclonal antibody to Complexin-1
Specificity	Recognizes endogenous levels of Complexin-1 protein
Antibody Type	Primary antibody
Immunogen	Recombinant fusion protein of human Complexin-1. The exact sequence is proprietary.
Purification	The antibody was purified by immunogen affinity chromatography.
Molecular Weight	Predicted: 15 kD; Observed: 15 kD
Form/Buffer	Liquid in 0.42% Potassium phosphate, 0.87% Sodium chloride, pH 7.3, 30% glycerol, and 0.01% sodium azide.
Alternative Names	Complexin-1; Complexin I; CPX I; Synaphin-2
Gene Symbol	CPLX1
Entrez Gene	10815(Human); 12889(Mouse); 64832(Rat)
SwissProt	O14810(Human); P63040(Mouse); P63041(Rat)

\*AREX continuously optimizes our products. Webpage content may not reflect the latest updates. For inquiries, please contact [info@arexbio.com](mailto:info@arexbio.com) or your local distributor.

\*Clone Number, Reactivity, Source/Host and Clonality can be found in the product name and Key Features section above.

**DATASHEET****Complexin-1 Rabbit Polyclonal Antibody**

CAT. NO. APA15365

**DATA**

Western blot analysis of Complexin-1 expression in SHSY5Y (A), mouse eye (B), rat brain (C) whole cell lysates. (Predicted band size: 15 kD; Observed band size: 15 kD)

**STORAGE**

Store at 4°C short term. For long term storage, store at -20°C, avoiding freeze/thaw cycles.

**NOTE**

For Research Use Only. Not for diagnostic, therapeutics, prophylactic or in vivo use.