

**DATASHEET**

**Copine-3 Rabbit Polyclonal Antibody**

CAT. NO. APA15367

**KEY FEATURES**

Target	Copine-3	Source / Host	Rabbit
Reactivity	Human, Mouse	Clonality	Polyclonal
Applications	WB	Conjugation	Unconjugated
Form / Buffer	Liquid in 0.42% Potassium phosphate, 0.87% Sodium chloride, pH 7.3, 30% glycerol, and 0.01% sodium azide.		Storage at -20°C

**BACKGROUND**

Calcium-dependent phospholipid-binding protein that plays a role in ERBB2-mediated tumor cell migration in response to growth factor heregulin stimulation .

**APPLICATION**

To ensure optimal assay performance, AREX recommends conducting reagent titration tailored to each testing system for optimal detection results.

WB	1:500 - 1:2000
----	----------------

\*Results are sample-specific. Please refer to your local assay conditions and test parameters for reference.

**PRODUCT OVERVIEW**

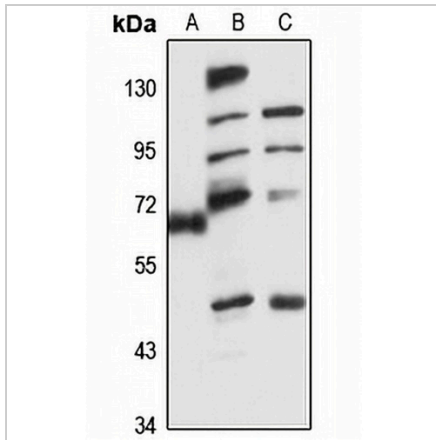
Description	Rabbit polyclonal antibody to Copine-3
Specificity	Recognizes endogenous levels of Copine-3 protein
Antibody Type	Primary antibody
Immunogen	Recombinant fusion protein of human Copine-3. The exact sequence is proprietary.
Purification	The antibody was purified by immunogen affinity chromatography.
Molecular Weight	Predicted: 60 kD; Observed: 60 kD
Form/Buffer	Liquid in 0.42% Potassium phosphate, 0.87% Sodium chloride, pH 7.3, 30% glycerol, and 0.01% sodium azide.
Alternative Names	CPN3; KIAA0636; Copine-3; Copine III
Gene Symbol	CPNE3
Entrez Gene	8895(Human); 70568(Mouse)
SwissProt	O75131(Human); Q8BT60(Mouse)

\*AREX continuously optimizes our products. Webpage content may not reflect the latest updates. For inquiries, please contact [info@arexbio.com](mailto:info@arexbio.com) or your local distributor.

\*Clone Number, Reactivity, Source/Host and Clonality can be found in the product name and Key Features section above.

**DATASHEET****Copine-3 Rabbit Polyclonal Antibody**

CAT. NO. APA15367

**DATA**

Western blot analysis of Copine-3 expression in OVCAR3 (A), mouse brain (B), mouse heart (C) whole cell lysates. (Predicted band size: 60 kD; Observed band size: 60 kD)

**STORAGE**

Store at 4°C short term. For long term storage, store at -20°C, avoiding freeze/thaw cycles.

**NOTE**

For Research Use Only. Not for diagnostic, therapeutics, prophylactic or in vivo use.