

DATASHEET

PGCP Rabbit Polyclonal Antibody

CAT. NO. APA15368

KEY FEATURES

Target	PGCP	Source / Host	Rabbit
Reactivity	Human, Mouse, Rat	Clonality	Polyclonal
Applications	WB	Conjugation	Unconjugated
Form / Buffer	Liquid in 0.42% Potassium phosphate, 0.87% Sodium chloride, pH 7.3, 30% glycerol, and 0.01% sodium azide.		Storage at -20°C

BACKGROUND

Carboxypeptidase that may play an important role in the hydrolysis of circulating peptides. Catalyzes the hydrolysis of dipeptides with unsubstituted terminals into amino acids. May play a role in the liberation of thyroxine hormone from its thyroglobulin (Tg) precursor.

APPLICATION

To ensure optimal assay performance, AREX recommends conducting reagent titration tailored to each testing system for optimal detection results.

WB	1:500 - 1:2000
----	----------------

*Results are sample-specific. Please refer to your local assay conditions and test parameters for reference.

PRODUCT OVERVIEW

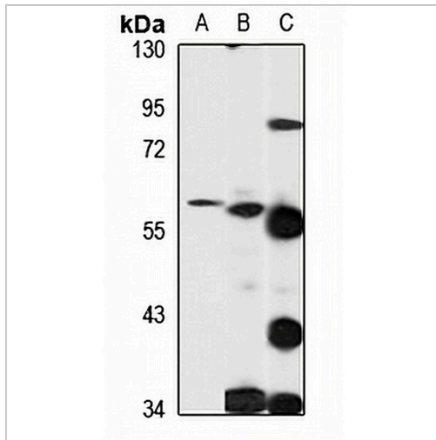
Description	Rabbit polyclonal antibody to PGCP
Specificity	Recognizes endogenous levels of PGCP protein
Antibody Type	Primary antibody
Immunogen	KLH-conjugated synthetic peptide of human PGCP. The exact sequence is proprietary.
Purification	The antibody was purified by immunogen affinity chromatography.
Molecular Weight	Predicted: 51 kD; Observed: 57-60 kD
Form/Buffer	Liquid in 0.42% Potassium phosphate, 0.87% Sodium chloride, pH 7.3, 30% glycerol, and 0.01% sodium azide.
Alternative Names	LCH1; PGCP; Carboxypeptidase Q; Lysosomal dipeptidase; Plasma glutamate carboxypeptidase
Gene Symbol	CPQ
Entrez Gene	10404(Human); 54381(Mouse); 58952(Rat)
SwissProt	Q9Y646(Human); Q9WVJ3(Mouse); Q6IRK9(Rat)

*AREX continuously optimizes our products. Webpage content may not reflect the latest updates. For inquiries, please contact info@arexbio.com or your local distributor.

*Clone Number, Reactivity, Source/Host and Clonality can be found in the product name and Key Features section above.

DATASHEET**PGCP Rabbit Polyclonal Antibody**

CAT. NO. APA15368

DATA

Western blot analysis of PGCP expression in LO2 (A), mouse kidney (B), rat kidney (C) whole cell lysates. (Predicted band size: 51 kD; Observed band size: 57-60 kD)

STORAGE

Store at 4°C short term. For long term storage, store at -20°C, avoiding freeze/thaw cycles.

NOTE

For Research Use Only. Not for diagnostic, therapeutics, prophylactic or in vivo use.