

DATASHEET

CPSF3 Rabbit Polyclonal Antibody

CAT. NO. APA15369

KEY FEATURES

Target	CPSF3	Source / Host	Rabbit
Reactivity	Human, Mouse, Rat	Clonality	Polyclonal
Applications	WB	Conjugation	Unconjugated
Form / Buffer	Liquid in 0.42% Potassium phosphate, 0.87% Sodium chloride, pH 7.3, 30% glycerol, and 0.01% sodium azide.		Storage at-20°C

BACKGROUND

Component of the cleavage and polyadenylation specificity factor (CPSF) complex that plays a key role in pre-mRNA 3'-end formation, recognizing the AAUAAA signal sequence and interacting with poly(A) polymerase and other factors to bring about cleavage and poly(A) addition. Has endonuclease activity, and functions as an mRNA 3'-end-processing endonuclease complex that plays a key role in pre-mRNA 3'-end formation, recognizing the AAUAAA signal sequence and interacting with poly(A) polymerase and other factors to bring about cleavage and poly(A) addition. Has endonuclease activity, and functions as an mRNA 3'-end-processing endonuclease. Also involved in the histone 3'-end pre-mRNA processing.

APPLICATION

To ensure optimal assay performance, AREX recommends conducting reagent titration tailored to each testing system for optimal detection results.

WB	1:500 - 1:2000
----	----------------

*Results are sample-specific. Please refer to your local assay conditions and test parameters for reference.

PRODUCT OVERVIEW

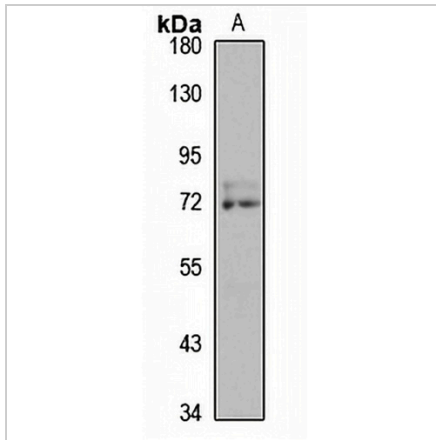
Description	Rabbit polyclonal antibody to CPSF3
Specificity	Recognizes endogenous levels of CPSF3 protein
Antibody Type	Primary antibody
Immunogen	Recombinant fusion protein of human CPSF3. The exact sequence is proprietary.
Purification	The antibody was purified by immunogen affinity chromatography.
Molecular Weight	Predicted: 77 kD; Observed: 73 kD
Form/Buffer	Liquid in 0.42% Potassium phosphate, 0.87% Sodium chloride, pH 7.3, 30% glycerol, and 0.01% sodium azide.
Alternative Names	CPSF73; Cleavage and polyadenylation specificity factor subunit 3; Cleavage and polyadenylation specificity factor 73 kDa subunit; CPSF 73 kDa subunit; mRNA 3'-end-processing endonuclease CPSF-73
Gene Symbol	CPSF3
Entrez Gene	51692(Human); 54451(Mouse)
SwissProt	Q9UKF6(Human); Q9QXK7(Mouse)

*AREX continuously optimizes our products. Webpage content may not reflect the latest updates. For inquiries, please contact info@arex.bio or your local distributor.

*Clone Number, Reactivity, Source/Host and Clonality can be found in the product name and Key Features section above.

DATASHEET**CPSF3 Rabbit Polyclonal Antibody**

CAT. NO. APA15369

DATA

Western blot analysis of CPSF3 expression in mouse spleen (A) whole cell lysates.
(Predicted band size: 77 kD; Observed band size: 73 kD)

STORAGE

Store at 4°C short term. For long term storage, store at -20°C, avoiding freeze/thaw cycles.

NOTE

For Research Use Only. Not for diagnostic, therapeutics, prophylactic or in vivo use.