

DATASHEET

CPSF7 Rabbit Polyclonal Antibody

CAT. NO. APA15371

KEY FEATURES

Target	CPSF7	Source / Host	Rabbit
Reactivity	Human, Mouse, Rat	Clonality	Polyclonal
Applications	WB	Conjugation	Unconjugated
Form / Buffer	Liquid in 0.42% Potassium phosphate, 0.87% Sodium chloride, pH 7.3, 30% glycerol, and 0.01% sodium azide.		Storage at-20°C

BACKGROUND

Component of the cleavage factor Im (CFIm) complex that functions as an activator of the pre-mRNA 3'-end cleavage and polyadenylation processing required for the maturation of pre-mRNA into functional mRNAs complex that functions as an activator of the pre-mRNA 3'-end cleavage and polyadenylation processing required for the maturation of pre-mRNA into functional mRNAs . CFIm contributes to the recruitment of multiprotein complexes on specific sequences on the pre-mRNA 3'-end, so called cleavage and polyadenylation signals (pA signals) . Most pre-mRNAs contain multiple pA signals, resulting in alternative cleavage and polyadenylation (APA) producing mRNAs with variable 3'-end formation .

APPLICATION

To ensure optimal assay performance, AREX recommends conducting reagent titration tailored to each testing system for optimal detection results.

WB	1:500 - 1:2000
----	----------------

*Results are sample-specific. Please refer to your local assay conditions and test parameters for reference.

PRODUCT OVERVIEW

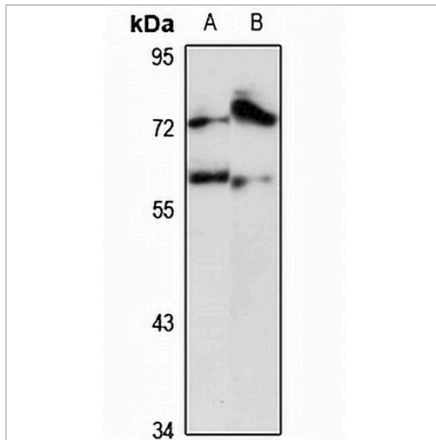
Description	Rabbit polyclonal antibody to CPSF7
Specificity	Recognizes endogenous levels of CPSF7 protein
Antibody Type	Primary antibody
Immunogen	Recombinant fusion protein of human CPSF7. The exact sequence is proprietary.
Purification	The antibody was purified by immunogen affinity chromatography.
Molecular Weight	Predicted: 51; Observed: 60 kD
Form/Buffer	Liquid in 0.42% Potassium phosphate, 0.87% Sodium chloride, pH 7.3, 30% glycerol, and 0.01% sodium azide.
Alternative Names	Cleavage and polyadenylation specificity factor subunit 7; Cleavage and polyadenylation specificity factor 59 kDa subunit; CFIm59; CPSF 59 kDa subunit; Pre-mRNA cleavage factor Im 59 kDa subunit
Gene Symbol	CPSF7
Entrez Gene	79869(Human); 269061(Mouse); 365407(Rat)
SwissProt	Q8N684(Human); Q8BTV2(Mouse); Q5XI29(Rat)

*AREX continuously optimizes our products. Webpage content may not reflect the latest updates. For inquiries, please contact info@arexbio.com or your local distributor.

*Clone Number, Reactivity, Source/Host and Clonality can be found in the product name and Key Features section above.

DATASHEET**CPSF7 Rabbit Polyclonal Antibody**

CAT. NO. APA15371

DATA

Western blot analysis of CPSF7 expression in HepG2 (A), mouse thymus (B) whole cell lysates. (Predicted band size: 51; 52; 56 kD; Observed band size: 60 kD)

STORAGE

Store at 4°C short term. For long term storage, store at -20°C, avoiding freeze/thaw cycles.

NOTE

For Research Use Only. Not for diagnostic, therapeutics, prophylactic or in vivo use.