

DATASHEET

CPVL Rabbit Polyclonal Antibody

CAT. NO. APA15372

KEY FEATURES

Target	CPVL	Source / Host	Rabbit
Reactivity	Human, Mouse, Rat	Clonality	Polyclonal
Applications	WB	Conjugation	Unconjugated
Form / Buffer	Liquid in 0.42% Potassium phosphate, 0.87% Sodium chloride, pH 7.3, 30% glycerol, and 0.01% sodium azide.		Storage at -20°C

BACKGROUND

May be involved in the digestion of phagocytosed particles in the lysosome, participation in an inflammatory protease cascade, and trimming of peptides for antigen presentation.

APPLICATION

To ensure optimal assay performance, AREX recommends conducting reagent titration tailored to each testing system for optimal detection results.

WB	1:500 - 1:2000
----	----------------

*Results are sample-specific. Please refer to your local assay conditions and test parameters for reference.

PRODUCT OVERVIEW

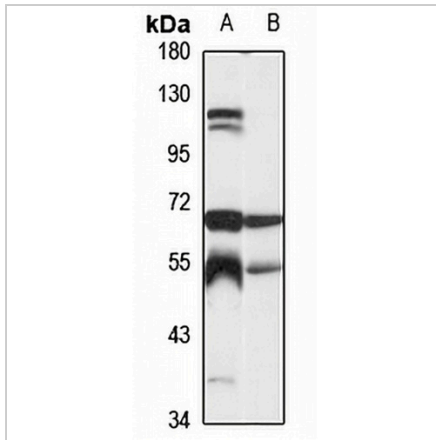
Description	Rabbit polyclonal antibody to CPVL
Specificity	Recognizes endogenous levels of CPVL protein
Antibody Type	Primary antibody
Immunogen	Recombinant fusion protein of human CPVL. The exact sequence is proprietary.
Purification	The antibody was purified by immunogen affinity chromatography.
Molecular Weight	Predicted: 54 kD; Observed: 54 kD
Form/Buffer	Liquid in 0.42% Potassium phosphate, 0.87% Sodium chloride, pH 7.3, 30% glycerol, and 0.01% sodium azide.
Alternative Names	VLP; Probable serine carboxypeptidase CPVL; Carboxypeptidase vitellogenic-like; Vitellogenic carboxypeptidase-like protein; VCP-like protein; hVLP
Gene Symbol	CPVL
Entrez Gene	54504(Human); 71287(Mouse); 502774(Rat)
SwissProt	Q9H3G5(Human); Q9D3S9(Mouse); Q4QR71(Rat)

*AREX continuously optimizes our products. Webpage content may not reflect the latest updates. For inquiries, please contact info@arexbio.com or your local distributor.

*Clone Number, Reactivity, Source/Host and Clonality can be found in the product name and Key Features section above.

DATASHEET**CPVL Rabbit Polyclonal Antibody**

CAT. NO. APA15372

DATA

Western blot analysis of CPVL expression in HEK293T (A), rat brain (B) whole cell lysates.
(Predicted band size: 54 kD; Observed band size: 54 kD)

STORAGE

Store at 4°C short term. For long term storage, store at -20°C, avoiding freeze/thaw cycles.

NOTE

For Research Use Only. Not for diagnostic, therapeutics, prophylactic or in vivo use.