

DATASHEET

CRCP Rabbit Polyclonal Antibody

CAT. NO. APA15373

KEY FEATURES

Target	CRCP	Source / Host	Rabbit
Reactivity	Human, Mouse, Rat	Clonality	Polyclonal
Applications	WB, IHC	Conjugation	Unconjugated
Form / Buffer	Liquid in 0.42% Potassium phosphate, 0.87% Sodium chloride, pH 7.3, 30% glycerol, and 0.01% sodium azide.		Storage at -20°C

BACKGROUND

DNA-dependent RNA polymerase catalyzes the transcription of DNA into RNA using the four ribonucleoside triphosphates as substrates. Specific peripheric component of RNA polymerase III (Pol III) which synthesizes small non-coding RNAs including 5S rRNA, snRNAs, tRNAs and miRNAs from at least 500 distinct genomic loci. With POLR3H/RPC8 forms a mobile stalk that protrudes from Pol III core and functions primarily in transcription initiation. Pol III plays a key role in sensing and limiting infection by intracellular bacteria and DNA viruses. Acts as nuclear and cytosolic DNA sensor involved in innate immune response. Can sense non-self dsDNA that serves as template for transcription into dsRNA.

APPLICATION

To ensure optimal assay performance, AREX recommends conducting reagent titration tailored to each testing system for optimal detection results.

WB	1:500 - 1:2000
IHC	1:50 - 1:200

*Results are sample-specific. Please refer to your local assay conditions and test parameters for reference.

PRODUCT OVERVIEW

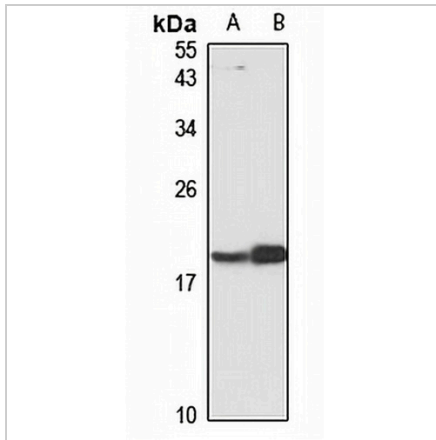
Description	Rabbit polyclonal antibody to CRCP
Specificity	Recognizes endogenous levels of CRCP protein
Antibody Type	Primary antibody
Immunogen	Recombinant fusion protein of human CRCP. The exact sequence is proprietary.
Purification	The antibody was purified by immunogen affinity chromatography.
Molecular Weight	Predicted: 8; Observed: 20 kD
Form/Buffer	Liquid in 0.42% Potassium phosphate, 0.87% Sodium chloride, pH 7.3, 30% glycerol, and 0.01% sodium azide.
Alternative Names	DNA-directed RNA polymerase III subunit RPC9; RNA polymerase III subunit C9; Calcitonin gene-related peptide-receptor component protein; CGRP-RCP; CGRP-receptor component protein; CGRPRCP; HsC17
Gene Symbol	CRCP
Entrez Gene	27297(Human); 12909(Mouse); 114205(Rat)
SwissProt	O75575(Human); O35427(Mouse); Q8VHM6(Rat)

*AREX continuously optimizes our products. Webpage content may not reflect the latest updates. For inquiries, please contact info@arexbio.com or your local distributor.

*Clone Number, Reactivity, Source/Host and Clonality can be found in the product name and Key Features section above.

DATASHEET**CRCP Rabbit Polyclonal Antibody**

CAT. NO. APA15373

DATA

Western blot analysis of CRCP expression in HeLa (A), mouse testis (B) whole cell lysates.
(Predicted band size: 8; 13; 15; 16 kD; Observed band size: 20 kD)

STORAGE

Store at 4°C short term. For long term storage, store at -20°C, avoiding freeze/thaw cycles.

NOTE

For Research Use Only. Not for diagnostic, therapeutics, prophylactic or in vivo use.