

DATASHEET

CREB3L3 Rabbit Polyclonal Antibody

CAT. NO. APA15374

KEY FEATURES

Target	CREB3L3	Source / Host	Rabbit
Reactivity	Human, Mouse, Rat	Clonality	Polyclonal
Applications	WB	Conjugation	Unconjugated
Form / Buffer	Liquid in 0.42% Potassium phosphate, 0.87% Sodium chloride, pH 7.3, 30% glycerol, and 0.01% sodium azide.		Storage at-20°C

BACKGROUND

Transcription factor that may act during endoplasmic reticulum stress by activating unfolded protein response target genes. Activated in response to cAMP stimulation. In vitro, binds to the cAMP response element (CRE) and box-B element. Activates transcription through box-B element. Activates transcription through CRE . May function synergistically with ATF6. In acute inflammatory response, may activate expression of acute phase response (APR) genes. May be involved in growth suppression. Regulates FGF21 transcription . Plays a crucial role in the regulation of triglyceride metabolism and is required for the maintenance of normal plasma triglyceride concentrations and box-B element. Activates transcription through box-B element. Activates transcription through CRE .

APPLICATION

To ensure optimal assay performance, AREX recommends conducting reagent titration tailored to each testing system for optimal detection results.

WB	1:500 - 1:2000
----	----------------

*Results are sample-specific. Please refer to your local assay conditions and test parameters for reference.

PRODUCT OVERVIEW

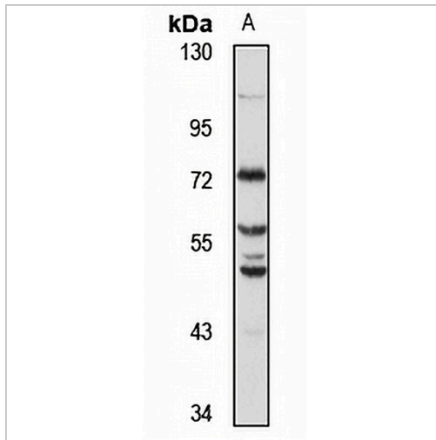
Description	Rabbit polyclonal antibody to CREB3L3
Specificity	Recognizes endogenous levels of CREB3L3 protein
Antibody Type	Primary antibody
Immunogen	Recombinant fusion protein of human CREB3L3. The exact sequence is proprietary.
Purification	The antibody was purified by immunogen affinity chromatography.
Molecular Weight	Predicted: 35; Observed: 70 kD
Form/Buffer	Liquid in 0.42% Potassium phosphate, 0.87% Sodium chloride, pH 7.3, 30% glycerol, and 0.01% sodium azide.
Alternative Names	CREBH; Cyclic AMP-responsive element-binding protein 3-like protein 3; cAMP-responsive element-binding protein 3-like protein 3; Transcription factor CREB-H
Gene Symbol	CREB3L3
Entrez Gene	84699(Human); 208677(Mouse); 314638(Rat)
SwissProt	Q68CJ9(Human); Q91XE9(Mouse); Q5FVM5(Rat)

*AREX continuously optimizes our products. Webpage content may not reflect the latest updates. For inquiries, please contact info@arexbio.com or your local distributor.

*Clone Number, Reactivity, Source/Host and Clonality can be found in the product name and Key Features section above.

DATASHEET**CREB3L3 Rabbit Polyclonal Antibody**

CAT. NO. APA15374

DATA

Western blot analysis of CREB3L3 expression in mouse liver (A) whole cell lysates.
(Predicted band size: 35; 48; 49 kD; Observed band size: 70 kD)

STORAGE

Store at 4°C short term. For long term storage, store at -20°C, avoiding freeze/thaw cycles.

NOTE

For Research Use Only. Not for diagnostic, therapeutics, prophylactic or in vivo use.