

DATASHEET

CRIP2 Rabbit Polyclonal Antibody

CAT. NO. APA15375

KEY FEATURES

Target	CRIP2	Source / Host	Rabbit
Reactivity	Human, Mouse, Rat	Clonality	Polyclonal
Applications	WB	Conjugation	Unconjugated
Form / Buffer	Liquid in 0.42% Potassium phosphate, 0.87% Sodium chloride, pH 7.3, 30% glycerol, and 0.01% sodium azide.		Storage at -20°C

BACKGROUND

This gene encodes a putative transcription factor with two LIM zinc-binding domains. The encoded protein may participate in the differentiation of smooth muscle tissue. Alternative splicing results in multiple transcript variants.

APPLICATION

To ensure optimal assay performance, AREX recommends conducting reagent titration tailored to each testing system for optimal detection results.

WB	1:500 - 1:2000
----	----------------

*Results are sample-specific. Please refer to your local assay conditions and test parameters for reference.

PRODUCT OVERVIEW

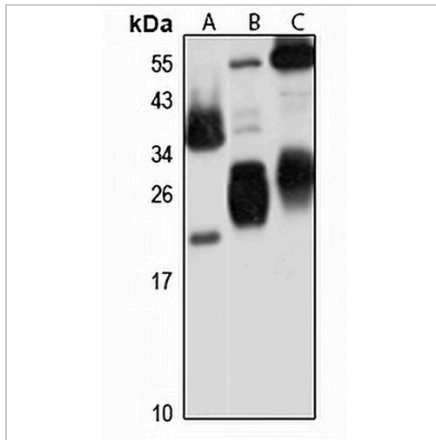
Description	Rabbit polyclonal antibody to CRIP2
Specificity	Recognizes endogenous levels of CRIP2 protein
Antibody Type	Primary antibody
Immunogen	Recombinant fusion protein of human CRIP2. The exact sequence is proprietary.
Purification	The antibody was purified by immunogen affinity chromatography.
Molecular Weight	Predicted: 22; Observed: 22 kD
Form/Buffer	Liquid in 0.42% Potassium phosphate, 0.87% Sodium chloride, pH 7.3, 30% glycerol, and 0.01% sodium azide.
Alternative Names	CRP2; Cysteine-rich protein 2; CRP-2; Protein ESP1
Gene Symbol	CRIP2
Entrez Gene	1397(Human); 68337(Mouse); 338401(Rat)
SwissProt	P52943(Human); Q9DCT8(Mouse); P36201(Rat)

*AREX continuously optimizes our products. Webpage content may not reflect the latest updates. For inquiries, please contact info@arexbio.com or your local distributor.

*Clone Number, Reactivity, Source/Host and Clonality can be found in the product name and Key Features section above.

DATASHEET**CRIP2 Rabbit Polyclonal Antibody**

CAT. NO. APA15375

DATA

Western blot analysis of CRIP2 expression in HepG2 (A), mouse lung (B), rat heart (C) whole cell lysates. (Predicted band size: 22; 30 kD; Observed band size: 22 kD)

STORAGE

Store at 4°C short term. For long term storage, store at -20°C, avoiding freeze/thaw cycles.

NOTE

For Research Use Only. Not for diagnostic, therapeutics, prophylactic or in vivo use.