

DATASHEET

Cornulin Rabbit Polyclonal Antibody

CAT. NO. APA15376

KEY FEATURES

Target	Cornulin	Source / Host	Rabbit
Reactivity	Human, Mouse, Rat	Clonality	Polyclonal
Applications	WB	Conjugation	Unconjugated
Form / Buffer	Liquid in 0.42% Potassium phosphate, 0.87% Sodium chloride, pH 7.3, 30% glycerol, and 0.01% sodium azide.		Storage at -20°C

BACKGROUND

Promotes cell proliferation, G1/S cell cycle progression and induces expression of the cell cycle regulator CCND1 . Regulates proliferation induced by pro-inflammatory cytokine response via activation of NFKB1 and PI3K/AKT signaling pathways .

APPLICATION

To ensure optimal assay performance, AREX recommends conducting reagent titration tailored to each testing system for optimal detection results.

WB	1:500 - 1:2000
----	----------------

*Results are sample-specific. Please refer to your local assay conditions and test parameters for reference.

PRODUCT OVERVIEW

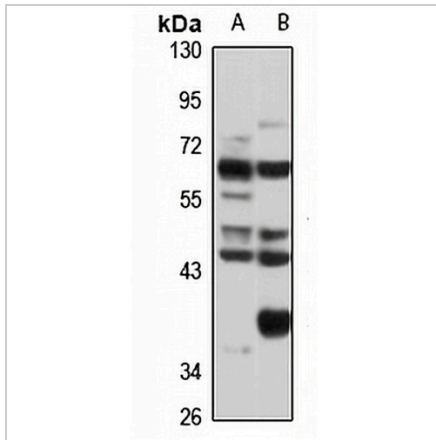
Description	Rabbit polyclonal antibody to Cornulin
Specificity	Recognizes endogenous levels of Cornulin protein
Antibody Type	Primary antibody
Immunogen	Recombinant fusion protein of human Cornulin. The exact sequence is proprietary.
Purification	The antibody was purified by immunogen affinity chromatography.
Molecular Weight	Predicted: 53 kD; Observed: 60 kD
Form/Buffer	Liquid in 0.42% Potassium phosphate, 0.87% Sodium chloride, pH 7.3, 30% glycerol, and 0.01% sodium azide.
Alternative Names	C1orf10; DRC1; PDRC1; SEP53; Cornulin; 53 kDa putative calcium-binding protein; 53 kDa squamous epithelial-induced stress protein; 58 kDa heat shock protein; Squamous epithelial heat shock protein 53; Tumor-related protein
Gene Symbol	CRNN
Entrez Gene	49860(Human)
SwissProt	Q9UBG3(Human)

*AREX continuously optimizes our products. Webpage content may not reflect the latest updates. For inquiries, please contact info@arexbio.com or your local distributor.

*Clone Number, Reactivity, Source/Host and Clonality can be found in the product name and Key Features section above.

DATASHEET**Cornulin Rabbit Polyclonal Antibody**

CAT. NO. APA15376

DATA

Western blot analysis of Cornulin expression in HEK293T (A), mouse kidney (B) whole cell lysates. (Predicted band size: 53 kD; Observed band size: 60 kD)

STORAGE

Store at 4°C short term. For long term storage, store at -20°C, avoiding freeze/thaw cycles.

NOTE

For Research Use Only. Not for diagnostic, therapeutics, prophylactic or in vivo use.